

Product datasheet for TA331345

PAPLN Rabbit Polyclonal Antibody

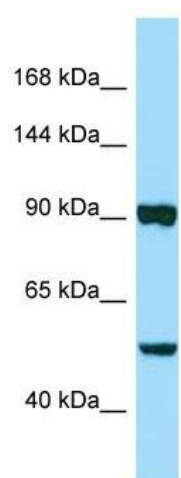
Product data:

Product Type:	Primary Antibodies
Applications:	WB
Recommended Dilution:	WB
Reactivity:	Human
Host:	Rabbit
Isotype:	IgG
Clonality:	Polyclonal
Immunogen:	The immunogen for Anti-PAPLN antibody is: synthetic peptide directed towards the C-terminal region of Human PAPLN. Synthetic peptide located within the following region: YQGSQAVSRSTEVKVVSPAPTAQPRDPGRDCVDQPELANCDLILQAQLCG
Formulation:	Liquid. Purified antibody supplied in 1x PBS buffer with 0.09% (w/v) sodium azide and 2% sucrose. <i>Note that this product is shipped as lyophilized powder to China customers.</i>
Purification:	Affinity Purified
Conjugation:	Unconjugated
Storage:	Store at -20°C as received.
Stability:	Stable for 12 months from date of receipt.
Predicted Protein Size:	52 kDa
Gene Name:	papilin, proteoglycan-like sulfated glycoprotein
Database Link:	NP_775733 Entrez Gene 89932 Human O95428
Background:	The function of this protein remains unknown.
Synonyms:	DKFZp434F053; MGC50452
Note:	Human: 100%; Bovine: 93%; Pig: 86%; Dog: 79%; Horse: 79%; Rat: 75%



[View online »](#)

Product images:



Host: Rabbit; Target Name: PAPLN; Sample Tissue: PANC1 Whole Cell lysates; Antibody Dilution: 1.0ug/ml