

Product datasheet for TA331342

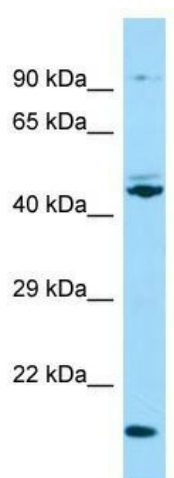
ODF3 Rabbit Polyclonal Antibody

Product data:

Product Type:	Primary Antibodies
Applications:	WB
Recommended Dilution:	WB
Reactivity:	Human
Host:	Rabbit
Isotype:	IgG
Clonality:	Polyclonal
Immunogen:	The immunogen for Anti-ODF3 antibody is: synthetic peptide directed towards the N-terminal region of Human ODF3. Synthetic peptide located within the following region: IPPTTGFMKHTPTKLRAPAYSFRGAPMLLAENCSPGPRYNVNPILRTGK
Formulation:	Liquid. Purified antibody supplied in 1x PBS buffer with 0.09% (w/v) sodium azide and 2% sucrose. <i>Note that this product is shipped as lyophilized powder to China customers.</i>
Purification:	Affinity Purified
Conjugation:	Unconjugated
Storage:	Store at -20°C as received.
Stability:	Stable for 12 months from date of receipt.
Predicted Protein Size:	15 kDa
Gene Name:	outer dense fiber of sperm tails 3
Database Link:	NP_444510 Entrez Gene 113746 Human Q96PU9
Background:	ODF3 is a component of sperm flagella outer dense fibers, which add stiffness, elastic recoil, and protection against shearing forces during sperm movement.
Synonyms:	CT135; SHIPPO1; TISP50
Note:	Human: 100%; Dog: 93%; Pig: 93%; Rat: 93%; Mouse: 93%; Bovine: 93%; Rabbit: 93%; Guinea pig: 93%; Horse: 86%



[View online »](#)

Product images:

Host: Rabbit; Target Name: ODF3; Sample Tissue:
Hela Whole Cell lysates; Antibody Dilution:
1.0ug/ml