

## Product datasheet for **TA331339**

### MBD3L2 Rabbit Polyclonal Antibody

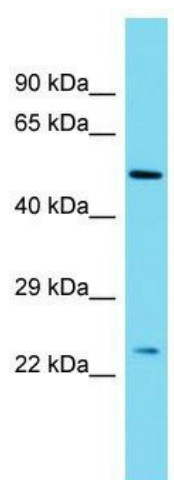
#### Product data:

Product Type:	Primary Antibodies
Applications:	WB
Recommended Dilution:	WB
Reactivity:	Human
Host:	Rabbit
Isotype:	IgG
Clonality:	Polyclonal
Immunogen:	The immunogen for Anti-MBD3L2 antibody is: synthetic peptide directed towards the middle region of Human MBD3L2. Synthetic peptide located within the following region: EHLEKPQQLCAYRRLQALQPCSSQGEGSSPLHLESVLSILAPGTAGESLD
Formulation:	Liquid. Purified antibody supplied in 1x PBS buffer with 0.09% (w/v) sodium azide and 2% sucrose.
Conjugation:	Unconjugated
Storage:	Store at -20°C as received.
Stability:	Stable for 12 months from date of receipt.
Predicted Protein Size:	23 kDa
Gene Name:	methyl-CpG binding domain protein 3 like 2
Database Link:	<a href="#">NP_653215</a> <a href="#">Entrez Gene 125997 Human</a> <a href="#">Q8NHZ7</a>
Background:	This gene encodes a protein that is related to methyl-CpG-binding proteins but lacks the methyl-CpG binding domain. The protein has been found in germ cell tumors and some somatic tissues.
Synonyms:	methyl-CpG binding domain protein 3-like 2
Note:	Human: 100%



[View online »](#)

## Product images:



Host: Rabbit; Target Name: MBD3L2; Sample  
Tissue: Placenta lysates; Antibody Dilution:  
1.0ug/ml