

Product datasheet for **TA331338**

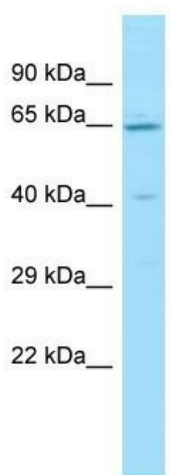
Lano (LRRC1) Rabbit Polyclonal Antibody

Product data:

Product Type:	Primary Antibodies
Applications:	WB
Recommended Dilution:	WB
Reactivity:	Human
Host:	Rabbit
Isotype:	IgG
Clonality:	Polyclonal
Immunogen:	The immunogen for Anti-LRRC1 antibody is: synthetic peptide directed towards the C-terminal region of Human LRRC1. Synthetic peptide located within the following region: RTLRRATPHPGELKHMKKTVENLRNDMNAAKGLDSNKNEVNHAIDRVTT
Formulation:	Liquid. Purified antibody supplied in 1x PBS buffer with 0.09% (w/v) sodium azide and 2% sucrose. <i>Note that this product is shipped as lyophilized powder to China customers.</i>
Purification:	Affinity Purified
Conjugation:	Unconjugated
Storage:	Store at -20°C as received.
Stability:	Stable for 12 months from date of receipt.
Predicted Protein Size:	59 kDa
Gene Name:	leucine rich repeat containing 1
Database Link:	NP_060684 Entrez Gene 55227 Human Q9BTT6
Background:	The function of this protein remains unknown.
Synonyms:	dJ523E19.1; LANO
Note:	Dog: 100%; Pig: 100%; Rat: 100%; Horse: 100%; Human: 100%; Mouse: 100%; Rabbit: 100%; Guinea pig: 100%; Bovine: 93%; Zebrafish: 86%



[View online »](#)

Product images:

Host: Rabbit

Target Name: LRRC1

Sample Tissue: 721_B Cell Lysate

Antibody Dilution: 1.0µg/ml

Host: Rabbit; Target Name: LRRC1; Sample Tissue: 721_B Whole Cell lysates; Antibody Dilution: 1.0ug/ml; LRRC1 is strongly supported by BioGPS gene expression data to be expressed in Human 721_B cells