

## Product datasheet for **TA331336**

### **P2RY5 (LPAR6) Rabbit Polyclonal Antibody**

#### **Product data:**

<b>Product Type:</b>	Primary Antibodies
<b>Applications:</b>	WB
<b>Recommended Dilution:</b>	WB
<b>Reactivity:</b>	Human
<b>Host:</b>	Rabbit
<b>Isotype:</b>	IgG
<b>Clonality:</b>	Polyclonal
<b>Immunogen:</b>	The immunogen for Anti-LPAR6 antibody is: synthetic peptide directed towards the C-terminal region of Human LPAR6. Synthetic peptide located within the following region: VAAVRTMYPITLCIAVSNCCFDPIVYFTSDTIQNSIKMKNWSVRRSDFR
<b>Formulation:</b>	Liquid. Purified antibody supplied in 1x PBS buffer with 0.09% (w/v) sodium azide and 2% sucrose. <i>Note that this product is shipped as lyophilized powder to China customers.</i>
<b>Conjugation:</b>	Unconjugated
<b>Storage:</b>	Store at -20°C as received.
<b>Stability:</b>	Stable for 12 months from date of receipt.
<b>Predicted Protein Size:</b>	38 kDa
<b>Gene Name:</b>	lysophosphatidic acid receptor 6
<b>Database Link:</b>	<a href="#">NP_005758</a> <a href="#">Entrez Gene 10161 Human</a> <a href="#">P43657</a>
<b>Background:</b>	The protein encoded by this gene belongs to the family of G-protein coupled receptors, that are preferentially activated by adenosine and uridine nucleotides. This gene aligns with an internal intron of the retinoblastoma susceptibility gene in the reverse orientation. Alternative splicing results in multiple transcript variants.
<b>Synonyms:</b>	ARWH1; LAH3; P2RY5; P2Y5
<b>Note:</b>	Dog: 100%; Pig: 100%; Rat: 100%; Horse: 100%; Human: 100%; Mouse: 100%; Sheep: 100%; Bovine: 100%; Rabbit: 100%; Zebrafish: 86%

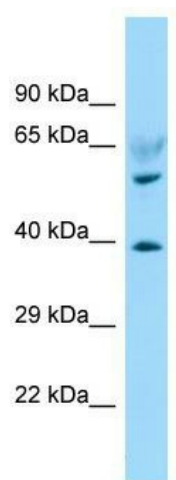


[View online »](#)

Protein Families: Druggable Genome, GPCR, Transmembrane

Protein Pathways: Neuroactive ligand-receptor interaction

### Product images:



WB Suggested Anti-LPAR6 Antibody; Titration: 1.0 ug/ml; Positive Control: Fetal Heart