

## Product datasheet for **TA331335**

### Legumain (LGMN) Rabbit Polyclonal Antibody

#### Product data:

Product Type:	Primary Antibodies
Applications:	WB
Recommended Dilution:	WB
Reactivity:	Human
Host:	Rabbit
Isotype:	IgG
Clonality:	Polyclonal
Immunogen:	The immunogen for Anti-LGMN antibody is: synthetic peptide directed towards the middle region of Human LGMN. Synthetic peptide located within the following region: ESSYACYDEKRSTYLGDWYSVNWME DSDVEDLTKETLHKQYHLVKSHTN
Formulation:	Liquid. Purified antibody supplied in 1x PBS buffer with 0.09% (w/v) sodium azide and 2% sucrose. <i>Note that this product is shipped as lyophilized powder to China customers.</i>
Conjugation:	Unconjugated
Storage:	Store at -20°C as received.
Stability:	Stable for 12 months from date of receipt.
Predicted Protein Size:	48 kDa
Gene Name:	legumain
Database Link:	<a href="#">NP_005597</a> <a href="#">Entrez Gene 5641 Human</a> <a href="#">Q99538</a>



[View online »](#)

**Background:** This gene encodes a cysteine protease that has a strict specificity for hydrolysis of asparaginyl bonds. This enzyme may be involved in the processing of bacterial peptides and endogenous proteins for MHC class II presentation in the lysosomal/endosomal systems. Enzyme activation is triggered by acidic pH and appears to be autocatalytic. Protein expression occurs after monocytes differentiate into dendritic cells. A fully mature, active enzyme is produced following lipopolysaccharide expression in mature dendritic cells. Overexpression of this gene may be associated with the majority of solid tumor types. This gene has a pseudogene on chromosome 13. Several alternatively spliced transcript variants have been described, but the biological validity of only two has been determined.

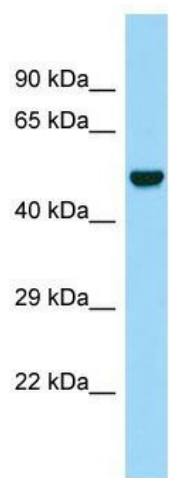
**Synonyms:** AEP; LGMN1; PRSC1

**Note:** Dog: 100%; Rat: 100%; Human: 100%; Mouse: 100%; Sheep: 100%; Bovine: 100%; Rabbit: 100%; Horse: 93%; Zebrafish: 93%; Pig: 86%; Guinea pig: 79%

**Protein Families:** Druggable Genome, Protease

**Protein Pathways:** Antigen processing and presentation, Lysosome

### Product images:



WB Suggested Anti-LGMN Antibody; Titration: 1.0 ug/ml; Positive Control: Fetal Brain