

Product datasheet for **TA331334**

Legumain (LGMN) Rabbit Polyclonal Antibody

Product data:

Product Type:	Primary Antibodies
Applications:	WB
Recommended Dilution:	WB
Reactivity:	Human
Host:	Rabbit
Isotype:	IgG
Clonality:	Polyclonal
Immunogen:	The immunogen for Anti-LGMN antibody is: synthetic peptide directed towards the middle region of Human LGMN. Synthetic peptide located within the following region: KMFVYIEACESGSMNHLDPNINVYATTAANPRESSYACYDEKRSTYLG
Formulation:	Liquid. Purified antibody supplied in 1x PBS buffer with 0.09% (w/v) sodium azide and 2% sucrose. <i>Note that this product is shipped as lyophilized powder to China customers.</i>
Conjugation:	Unconjugated
Storage:	Store at -20°C as received.
Stability:	Stable for 12 months from date of receipt.
Predicted Protein Size:	48 kDa
Gene Name:	legumain
Database Link:	NP_005597 Entrez Gene 5641 Human Q99538



[View online »](#)

Background: This gene encodes a cysteine protease that has a strict specificity for hydrolysis of asparaginyl bonds. This enzyme may be involved in the processing of bacterial peptides and endogenous proteins for MHC class II presentation in the lysosomal/endosomal systems. Enzyme activation is triggered by acidic pH and appears to be autocatalytic. Protein expression occurs after monocytes differentiate into dendritic cells. A fully mature, active enzyme is produced following lipopolysaccharide expression in mature dendritic cells. Overexpression of this gene may be associated with the majority of solid tumor types. This gene has a pseudogene on chromosome 13. Several alternatively spliced transcript variants have been described, but the biological validity of only two has been determined.

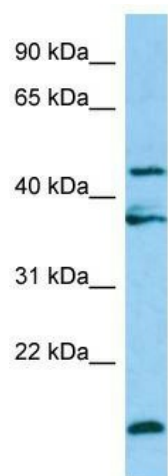
Synonyms: AEP; LGMN1; PRSC1

Note: Human: 100%; Dog: 93%; Rat: 93%; Pig: 86%; Mouse: 86%; Bovine: 86%; Rabbit: 86%; Zebrafish: 86%; Guinea pig: 86%; Horse: 79%

Protein Families: Druggable Genome, Protease

Protein Pathways: Antigen processing and presentation, Lysosome

Product images:



WB Suggested Anti-LGMN Antibody; Titration: 1.0 ug/ml; Positive Control: HepG2 Whole Cell