

Product datasheet for **TA331332**

KRT74 Rabbit Polyclonal Antibody

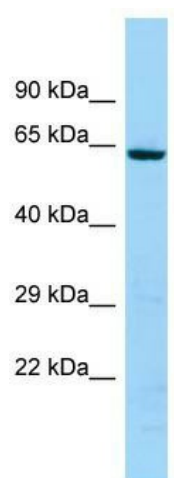
Product data:

Product Type:	Primary Antibodies
Applications:	WB
Recommended Dilution:	WB
Reactivity:	Human
Host:	Rabbit
Isotype:	IgG
Clonality:	Polyclonal
Immunogen:	The immunogen for Anti-KRT74 antibody is: synthetic peptide directed towards the C-terminal region of Human KRT74. Synthetic peptide located within the following region: HPSSAGVDLGASAVAGSSGSTQSGQTKTTEARGGDLKDTQGKSTPASIPA
Formulation:	Liquid. Purified antibody supplied in 1x PBS buffer with 0.09% (w/v) sodium azide and 2% sucrose.
Conjugation:	Unconjugated
Storage:	Store at -20°C as received.
Stability:	Stable for 12 months from date of receipt.
Predicted Protein Size:	58 kDa
Gene Name:	keratin 74
Database Link:	NP_778223 Entrez Gene 121391 Human Q7RTS7
Background:	Keratins are intermediate filament proteins responsible for the structural integrity of epithelial cells and are subdivided into epithelial keratins and hair keratins. This protein belongs to a family of keratins that are specifically expressed in the inner root sheath of hair follicles.
Synonyms:	ADWH; HTSS2; HYPT3; K6IRS4; KRT5C; KRT6IRS4
Note:	Human: 100%



[View online »](#)

Product images:



WB Suggested Anti-KRT74 Antibody; Titration: 1.0 ug/ml; Positive Control: 721_B Whole Cell