

Product datasheet for **TA331328**

GPR142 Rabbit Polyclonal Antibody

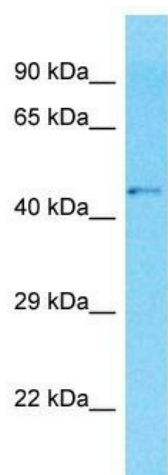
Product data:

Product Type:	Primary Antibodies
Applications:	WB
Recommended Dilution:	WB
Reactivity:	Human
Host:	Rabbit
Isotype:	IgG
Clonality:	Polyclonal
Immunogen:	The immunogen for Anti-GPR142 antibody is: synthetic peptide directed towards the N-terminal region of Human GPR142. Synthetic peptide located within the following region: IMMLPMEQKIQWVPTSLQDITAVLGTEAYTEEDKSMVSHAQKSQHSLSH
Formulation:	Liquid. Purified antibody supplied in 1x PBS buffer with 0.09% (w/v) sodium azide and 2% sucrose. <i>Note that this product is shipped as lyophilized powder to China customers.</i>
Conjugation:	Unconjugated
Storage:	Store at -20°C as received.
Stability:	Stable for 12 months from date of receipt.
Predicted Protein Size:	50 kDa
Gene Name:	G protein-coupled receptor 142
Database Link:	NP_861455 Entrez Gene 350383 Human Q7Z601
Background:	GPR142 is a member of the rhodopsin family of G protein-coupled receptors (GPRs).
Synonyms:	GPRg1b; PGR2
Note:	Human: 100%
Protein Families:	Druggable Genome, GPCR, Transmembrane



[View online »](#)

Product images:



Host: Rabbit

Target Name: GPR142

Sample Tissue: MDA-MB-435s Cell Lysate

Antibody Dilution: 1.0 μ g/ml

Host: Rabbit; Target Name: GPR142; Sample
Tissue: MDA-MB-435s Whole Cell lysates;
Antibody Dilution: 1.0ug/ml