

Product datasheet for **TA331327**

GNG3 Rabbit Polyclonal Antibody

Product data:

Product Type:	Primary Antibodies
Applications:	WB
Recommended Dilution:	WB
Reactivity:	Human
Host:	Rabbit
Isotype:	IgG
Clonality:	Polyclonal
Immunogen:	The immunogen for Anti-GNG3 antibody is: synthetic peptide directed towards the middle region of Human GNG3. Synthetic peptide located within the following region: IEASLCRIKVSAAAADLMTYCDAHACEDPLITPVPTSENPFREKKFFCAL
Formulation:	Liquid. Purified antibody supplied in 1x PBS buffer with 0.09% (w/v) sodium azide and 2% sucrose.
Conjugation:	Unconjugated
Storage:	Store at -20°C as received.
Stability:	Stable for 12 months from date of receipt.
Predicted Protein Size:	8 kDa
Gene Name:	G protein subunit gamma 3
Database Link:	NP_036334 Entrez Gene 2785 Human P63215
Background:	Guanine nucleotide binding proteins are heterotrimeric signal-transducing molecules consisting of alpha, beta, and gamma subunits. The gamma subunit determines the specificity of which signaling pathways will be affected by this particular complex. The protein encoded by this gene represents the gamma subunit of both inhibitory and stimulatory complexes.
Synonyms:	gamma 3; guanine nucleotide-binding protein gamma-3 subunit; guanine nucleotide binding protein (G protein); NBP gamma-3



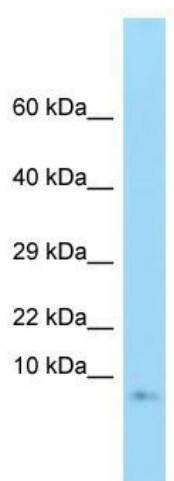
[View online »](#)

Note: Dog: 100%; Pig: 100%; Rat: 100%; Horse: 100%; Human: 100%; Mouse: 100%; Bovine: 100%; Rabbit: 100%; Zebrafish: 100%; Guinea pig: 100%

Protein Families: Druggable Genome

Protein Pathways: Chemokine signaling pathway, Taste transduction

Product images:



WB Suggested Anti-GNG3 Antibody; Titration: 1.0 ug/ml; Positive Control: Fetal Brain