

Product datasheet for **TA331326**

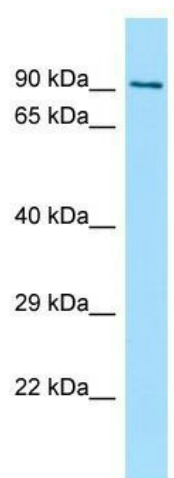
FSD2 Rabbit Polyclonal Antibody

Product data:

Product Type:	Primary Antibodies
Applications:	WB
Recommended Dilution:	WB
Reactivity:	Human
Host:	Rabbit
Isotype:	IgG
Clonality:	Polyclonal
Immunogen:	The immunogen for Anti-FSD2 antibody is: synthetic peptide directed towards the C-terminal region of Human FSD2. Synthetic peptide located within the following region: DYRVGVAFADVVRKQEDLGANCLSWCMRHTFASSRHKYEFLHNRTTPDIRI
Formulation:	Liquid. Purified antibody supplied in 1x PBS buffer with 0.09% (w/v) sodium azide and 2% sucrose. <i>Note that this product is shipped as lyophilized powder to China customers.</i>
Conjugation:	Unconjugated
Storage:	Store at -20°C as received.
Stability:	Stable for 12 months from date of receipt.
Predicted Protein Size:	85 kDa
Gene Name:	fibronectin type III and SPRY domain containing 2
Database Link:	NP_001007123 Entrez Gene 123722 Human A1L4K1
Background:	The function of this protein remains unknown.
Synonyms:	SPRYD1
Note:	Human: 100%; Pig: 86%; Rat: 86%; Horse: 86%; Guinea pig: 86%; Dog: 79%; Bovine: 79%
Protein Families:	Druggable Genome



[View online »](#)

Product images:

WB Suggested Anti-FSD2 Antibody; Titration: 1.0 ug/ml; Positive Control: 721_B Whole Cell