

## Product datasheet for **TA331325**

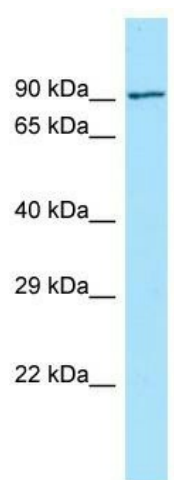
### FCHO2 Rabbit Polyclonal Antibody

#### Product data:

Product Type:	Primary Antibodies
Applications:	WB
Recommended Dilution:	WB
Reactivity:	Human
Host:	Rabbit
Isotype:	IgG
Clonality:	Polyclonal
Immunogen:	The immunogen for Anti-FCHO2 antibody is: synthetic peptide directed towards the N-terminal region of Human FCHO2. Synthetic peptide located within the following region: WDVFKTSTEKLANCHLDLVRKLQELIKEVQKYGEEQVKSHKKTKEEVAGT
Formulation:	Liquid. Purified antibody supplied in 1x PBS buffer with 0.09% (w/v) sodium azide and 2% sucrose.
Conjugation:	Unconjugated
Storage:	Store at -20°C as received.
Stability:	Stable for 12 months from date of receipt.
Predicted Protein Size:	89 kDa
Gene Name:	FCH domain only 2
Database Link:	<a href="#">NP_620137</a> <a href="#">Entrez Gene 115548 Human</a> <a href="#">Q0JRZ9</a>
Background:	FCHO2 may play a role in membrane remodeling by imposing and stabilizing particular membrane curvatures.
Synonyms:	FCH domain only 2
Note:	Dog: 100%; Pig: 100%; Rat: 100%; Horse: 100%; Human: 100%; Mouse: 100%; Bovine: 100%; Rabbit: 100%; Guinea pig: 100%; Zebrafish: 77%


[View online »](#)

## Product images:



WB Suggested Anti-FCHO2 Antibody; Titration:  
1.0 ug/ml; Positive Control: Hela Whole cell