

Product datasheet for **TA331324**

DYNC1LI2 Rabbit Polyclonal Antibody

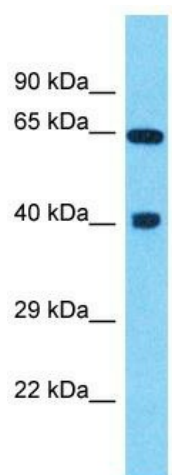
Product data:

Product Type:	Primary Antibodies
Applications:	WB
Recommended Dilution:	WB
Reactivity:	Human
Host:	Rabbit
Isotype:	IgG
Clonality:	Polyclonal
Immunogen:	The immunogen for Anti-DYNC1LI2 antibody is: synthetic peptide directed towards the N-terminal region of Human DYNC1LI2. Synthetic peptide located within the following region: KLPSGKNILVFGEDGSGKTTLMTKLQGAEHGKKGRGLELYLSVHDEDRD
Formulation:	Liquid. Purified antibody supplied in 1x PBS buffer with 0.09% (w/v) sodium azide and 2% sucrose. <i>Note that this product is shipped as lyophilized powder to China customers.</i>
Conjugation:	Unconjugated
Storage:	Store at -20°C as received.
Stability:	Stable for 12 months from date of receipt.
Predicted Protein Size:	45 kDa
Gene Name:	dynein cytoplasmic 1 light intermediate chain 2
Database Link:	NP_006132 Entrez Gene 1783 Human O43237
Background:	Cytoplasmic dynein is a microtubule-associated motor protein.
Synonyms:	DNCLI2; LIC2
Note:	Dog: 100%; Pig: 100%; Rat: 100%; Horse: 100%; Human: 100%; Mouse: 100%; Bovine: 100%; Rabbit: 100%; Guinea pig: 100%; Zebrafish: 93%
Protein Families:	Druggable Genome



[View online »](#)

Product images:



Host: Rabbit

Target Name: DYNC1LI2

Sample Tissue: COLO205 Cell Lysate

Antibody Dilution: 1.0 μ g/ml

Host: Rabbit; Target Name: DYNC1LI2; Sample Tissue: COLO205 Whole Cell lysates; Antibody Dilution: 1.0 μ g/ml