

## Product datasheet for **TA331323**

### DUSP13 Rabbit Polyclonal Antibody

#### Product data:

Product Type:	Primary Antibodies
Applications:	WB
Recommended Dilution:	WB
Reactivity:	Human
Host:	Rabbit
Isotype:	IgG
Clonality:	Polyclonal
Immunogen:	The immunogen for Anti-DUSP13 antibody is: synthetic peptide directed towards the N-terminal region of Human DUSP13. Synthetic peptide located within the following region: DRRLKASSTNCPSEKCTAWARYSHRMDSLQKQDLRRPKIHGAVQASPYQP
Formulation:	Liquid. Purified antibody supplied in 1x PBS buffer with 0.09% (w/v) sodium azide and 2% sucrose. <i>Note that this product is shipped as lyophilized powder to China customers.</i>
Conjugation:	Unconjugated
Storage:	Store at -20°C as received.
Stability:	Stable for 12 months from date of receipt.
Predicted Protein Size:	2 kDa
Gene Name:	dual specificity phosphatase 13
Database Link:	<a href="#">NP_001007274</a> <a href="#">Entrez Gene 51207 Human</a> <a href="#">Q6B811</a>



[View online »](#)

**Background:**

Members of the protein-tyrosine phosphatase superfamily cooperate with protein kinases to regulate cell proliferation and differentiation. This superfamily is separated into two families based on the substrate that is dephosphorylated. One family, the dual specificity phosphatases (DSPs) acts on both phosphotyrosine and phosphoserine/threonine residues. This gene encodes different but related DSP proteins through the use of non-overlapping open reading frames, alternate splicing, and presumed different transcription promoters. Expression of the distinct proteins from this gene has been found to be tissue specific and the proteins may be involved in postnatal development of specific tissues. A protein encoded by the upstream ORF was found in skeletal muscle, whereas the encoded protein from the downstream ORF was found only in testis.

**Synonyms:**

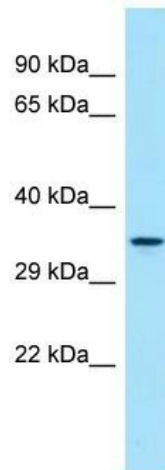
BEDP; DUSP13A; DUSP13B; MDSP; SKRP4; TMDP

**Note:**

Dog: 100%; Pig: 100%; Rat: 100%; Horse: 100%; Human: 100%; Bovine: 100%; Guinea pig: 100%; Mouse: 93%; Rabbit: 93%

**Protein Families:**

Druggable Genome, Phosphatase

**Product images:**

WB Suggested Anti-DUSP13 Antibody; Titration: 1.0 ug/ml; Positive Control: Fetal Lung