

Product datasheet for **TA331322**

D2HGDH Rabbit Polyclonal Antibody

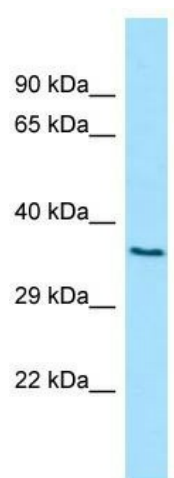
Product data:

Product Type:	Primary Antibodies
Applications:	WB
Recommended Dilution:	WB
Reactivity:	Human
Host:	Rabbit
Isotype:	IgG
Clonality:	Polyclonal
Immunogen:	The immunogen for Anti-D2HGDH antibody is: synthetic peptide directed towards the N-terminal region of Human D2HGDH. Synthetic peptide located within the following region: AFERIVPGGVVTDPEALQAPNVDWLRTLGRGCSKVLLRPRTSEEVSHILRH
Formulation:	Liquid. Purified antibody supplied in 1x PBS buffer with 0.09% (w/v) sodium azide and 2% sucrose.
Purification:	Affinity Purified
Conjugation:	Unconjugated
Storage:	Store at -20°C as received.
Stability:	Stable for 12 months from date of receipt.
Predicted Protein Size:	35 kDa
Gene Name:	D-2-hydroxyglutarate dehydrogenase
Database Link:	NP_689996 Entrez Gene 728294 Human Q8N465
Background:	The function of this protein remains unknown.
Synonyms:	D2HGD
Note:	Human: 100%; Rat: 93%; Dog: 92%; Rabbit: 92%; Mouse: 86%; Pig: 85%; Guinea pig: 85%; Horse: 79%; Bovine: 79%; Zebrafish: 77%



[View online »](#)

Product images:



Host: Rabbit; Target Name: D2HGDH; Sample
Tissue: 293T Whole Cell lysates; Antibody
Dilution: 1.0ug/ml