

Product datasheet for **TA331320**

EOLA1 Rabbit Polyclonal Antibody

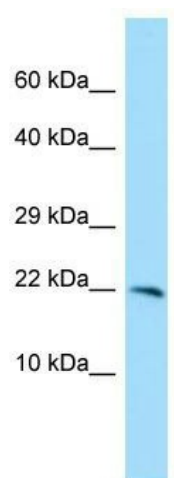
Product data:

Product Type:	Primary Antibodies
Applications:	WB
Recommended Dilution:	WB
Reactivity:	Human
Host:	Rabbit
Isotype:	IgG
Clonality:	Polyclonal
Immunogen:	The immunogen for Anti-CXorf40A antibody is: synthetic peptide directed towards the C-terminal region of Human CXorf40A. Synthetic peptide located within the following region: EDLTPDEVVELENQAVLTNLKQKYLTVISNPRWLLEPIPRKGGKDFVQVD
Formulation:	Liquid. Purified antibody supplied in 1x PBS buffer with 0.09% (w/v) sodium azide and 2% sucrose. <i>Note that this product is shipped as lyophilized powder to China customers.</i>
Conjugation:	Unconjugated
Storage:	Store at -20°C as received.
Stability:	Stable for 12 months from date of receipt.
Predicted Protein Size:	17 kDa
Gene Name:	chromosome X open reading frame 40A
Database Link:	NP_835225 Entrez Gene 91966 Human Q8TE69
Background:	CXorf40A may have an important role of cell protection in inflammation reaction.
Synonyms:	CXorf40; EOLA1; FLJ16423
Note:	Horse: 100%; Human: 100%; Dog: 93%; Rat: 93%; Mouse: 93%; Pig: 79%; Rabbit: 79%; Guinea pig: 79%



[View online »](#)

Product images:



WB Suggested Anti-CXorf40A Antibody; Titration: 1.0 ug/ml; Positive Control: MCF7 Whole Cell
CXorf40A is strongly supported by BioGPS gene expression data to be expressed in Human MCF7 cells