

Product datasheet for **TA331316**

CNO6L (CNOT6L) Rabbit Polyclonal Antibody

Product data:

| | |
|-------------------------|---------------------------------------------------------------------------------------------------------------------------------------------------------------------------------------------------------------------------------------------------------------------------------------------------------------------------------------------------|
| Product Type: | Primary Antibodies |
| Applications: | WB |
| Recommended Dilution: | WB |
| Reactivity: | Human |
| Host: | Rabbit |
| Isotype: | IgG |
| Clonality: | Polyclonal |
| Immunogen: | The immunogen for Anti-CNOT6L antibody is: synthetic peptide directed towards the middle region of Human CNOT6L. Synthetic peptide located within the following region: AKIMSEQERKHVDGCAIFFKTEKFTLVQKHTVEFNQVAMANS DGSEAMLN |
| Formulation: | Liquid. Purified antibody supplied in 1x PBS buffer with 0.09% (w/v) sodium azide and 2% sucrose. <i>Note that this product is shipped as lyophilized powder to China customers.</i> |
| Purification: | Affinity Purified |
| Conjugation: | Unconjugated |
| Storage: | Store at -20°C as received. |
| Stability: | Stable for 12 months from date of receipt. |
| Predicted Protein Size: | 52 kDa |
| Gene Name: | CCR4-NOT transcription complex subunit 6 like |
| Database Link: | NP_653172 Entrez Gene 246175 Human Q96LI5 |
| Background: | CNOT6L plays a role in the deadenylation of mRNAs in the cytoplasm. Has 3'-5' poly(A) exoribonuclease activity for synthetic poly(A) RNA substrate. It may be involved in the deadenylation-dependent degradation of mRNAs through the 3' UTR AU-rich element-mediated mechanism. Involved in deadenylation-dependent degradation of CDKN1B mRNA. |
| Synonyms: | CCR4b |

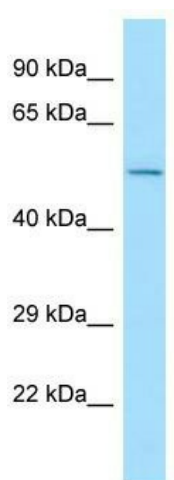


[View online »](#)

Note: Dog: 100%; Pig: 100%; Rat: 100%; Horse: 100%; Human: 100%; Mouse: 100%; Bovine: 100%; Rabbit: 100%; Guinea pig: 100%; Zebrafish: 86%

Protein Pathways: RNA degradation

Product images:



Host: Rabbit; Target Name: CNOT6L; Sample Tissue: HepG2 Whole Cell lysates; Antibody Dilution: 1.0ug/ml