

## Product datasheet for **TA331315**

### Chmp4c Rabbit Polyclonal Antibody

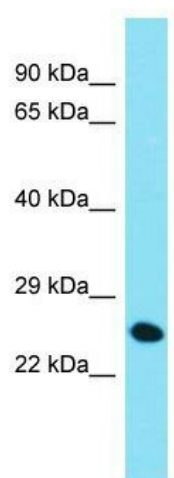
#### Product data:

Product Type:	Primary Antibodies
Applications:	WB
Recommended Dilution:	WB
Reactivity:	Mouse
Host:	Rabbit
Isotype:	IgG
Clonality:	Polyclonal
Immunogen:	The immunogen for Anti-Chmp4c antibody is: synthetic peptide directed towards the C-terminal region of Mouse Chmp4c. Synthetic peptide located within the following region: SEAFSQRVQFADGFDEAEELAELEELEQEELNKKMTSLELPNVPSSSLPA
Formulation:	Liquid. Purified antibody supplied in 1x PBS buffer with 0.09% (w/v) sodium azide and 2% sucrose. <i>Note that this product is shipped as lyophilized powder to China customers.</i>
Conjugation:	Unconjugated
Storage:	Store at -20°C as received.
Stability:	Stable for 12 months from date of receipt.
Predicted Protein Size:	26 kDa
Gene Name:	charged multivesicular body protein 4C
Database Link:	<a href="#">NP_079795</a> <a href="#">Entrez Gene 66371 Mouse Q9D7F7</a>
Background:	Chmp4c is a probable core component of the endosomal sorting required for transport complex III (ESCRT-III) which is involved in multivesicular bodies (MVBs) formation and sorting of endosomal cargo proteins into MVBs.
Synonyms:	hSnf7-3; hVps32-3; MGC22825; Shax3; SNF7-3; Vps32-3; VPS32C
Note:	Pig: 100%; Rat: 100%; Horse: 100%; Human: 100%; Mouse: 100%; Bovine: 100%; Rabbit: 100%; Guinea pig: 100%; Dog: 92%; Yeast: 92%; Zebrafish: 92%



[View online »](#)

## Product images:



Host: Rabbit; Target Name: Chmp4c; Sample  
Tissue: Mouse Liver lysates; Antibody Dilution:  
1.0ug/ml