

Product datasheet for **TA331314**

CEP120 Rabbit Polyclonal Antibody

Product data:

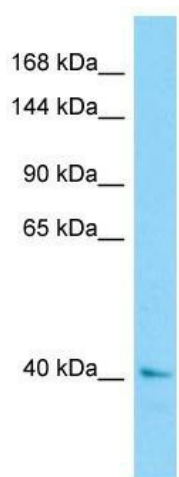
Product Type:	Primary Antibodies
Applications:	WB
Recommended Dilution:	WB
Reactivity:	Human
Host:	Rabbit
Isotype:	IgG
Clonality:	Polyclonal
Immunogen:	The immunogen for Anti-CEP120 antibody is: synthetic peptide directed towards the N-terminal region of Human CEP120. Synthetic peptide located within the following region: QHRLQRTPIKLQCFALDPVTSAKETIGYIVLRLTAQETKQAPKQWYQLLS
Formulation:	Liquid. Purified antibody supplied in 1x PBS buffer with 0.09% (w/v) sodium azide and 2% sucrose.
Purification:	Affinity Purified
Conjugation:	Unconjugated
Storage:	Store at -20°C as received.
Stability:	Stable for 12 months from date of receipt.
Predicted Protein Size:	41 kDa
Gene Name:	centrosomal protein 120
Database Link:	NP_694955 Entrez Gene 153241 Human Q8N960
Background:	This gene encodes a protein that functions in the microtubule-dependent coupling of the nucleus and the centrosome. A similar protein in mouse plays a role in both interkinetic nuclear migration, which is a characteristic pattern of nuclear movement in neural progenitors, and in neural progenitor self-renewal. Mutations in this gene are predicted to result in neurogenic defects.
Synonyms:	CCDC100; SRTD13



[View online »](#)

Note: Dog: 100%; Pig: 100%; Rat: 100%; Horse: 100%; Human: 100%; Mouse: 100%; Bovine: 100%; Rabbit: 100%; Guinea pig: 93%; Zebrafish: 77%

Product images:



Host: Rabbit; Target Name: CEP120; Sample Tissue: ACHN Whole Cell lysates; Antibody Dilution: 1.0ug/ml