

Product datasheet for TA331313

CENPO Rabbit Polyclonal Antibody

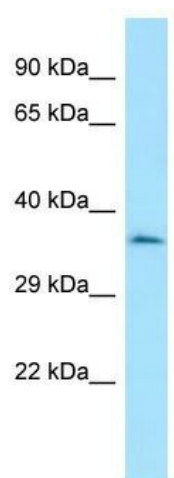
Product data:

Product Type:	Primary Antibodies
Applications:	WB
Recommended Dilution:	WB
Reactivity:	Human
Host:	Rabbit
Isotype:	IgG
Clonality:	Polyclonal
Immunogen:	The immunogen for Anti-CENPO antibody is: synthetic peptide directed towards the N-terminal region of Human CENPO. Synthetic peptide located within the following region: LERLETQVSRSRKQSEELQSVQAQEGALGTKIHKLRRLRDELRAVVRHRR
Formulation:	Liquid. Purified antibody supplied in 1x PBS buffer with 0.09% (w/v) sodium azide and 2% sucrose. <i>Note that this product is shipped as lyophilized powder to China customers.</i>
Conjugation:	Unconjugated
Storage:	Store at -20°C as received.
Stability:	Stable for 12 months from date of receipt.
Predicted Protein Size:	34 kDa
Gene Name:	centromere protein O
Database Link:	NP_077298 Entrez Gene 79172 Human Q9BU64
Background:	This gene encodes a component of the interphase centromere complex. The encoded protein is localized to the centromere throughout the cell cycle and is required for bipolar spindle assembly, chromosome segregation and checkpoint signaling during mitosis. Alternatively spliced transcript variants encoding multiple protein isoforms have been observed for this gene.
Synonyms:	CENP-O; ICEN-36; MCM21R
Note:	Human: 100%



[View online »](#)

Product images:



WB Suggested Anti-CENPO Antibody; Titration:
1.0 ug/ml; Positive Control: HepG2 Whole Cell