

Product datasheet for TA331312

p39 (CDK5R2) Rabbit Polyclonal Antibody

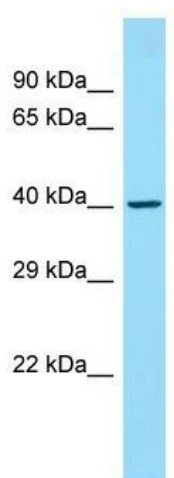
Product data:

Product Type:	Primary Antibodies
Applications:	WB
Recommended Dilution:	WB
Reactivity:	Human
Host:	Rabbit
Isotype:	IgG
Clonality:	Polyclonal
Immunogen:	The immunogen for Anti-CDK5R2 antibody is: synthetic peptide directed towards the N-terminal region of Human CDK5R2. Synthetic peptide located within the following region: KKKGSKKVTPKPASTGPDPLVQQRNRELLRKGRDPPDGGGTAKPLAVPV
Formulation:	Liquid. Purified antibody supplied in 1x PBS buffer with 0.09% (w/v) sodium azide and 2% sucrose. <i>Note that this product is shipped as lyophilized powder to China customers.</i>
Conjugation:	Unconjugated
Storage:	Store at -20°C as received.
Stability:	Stable for 12 months from date of receipt.
Predicted Protein Size:	39 kDa
Gene Name:	cyclin-dependent kinase 5 regulatory subunit 2
Database Link:	NP_003927 Entrez Gene 8941 Human Q13319
Background:	The protein encoded by this gene is a neuron-specific activator of CDK5 kinase. It associates with CDK5 to form an active kinase. This protein and neuron-specific CDK5 activator CDK5R1/p39NCK5A both share limited similarity to cyclins, and thus may define a distinct family of cyclin-dependent kinase activating proteins.
Synonyms:	NCK5AI; P39; p39nck5ai
Note:	Human: 100%; Pig: 93%; Mouse: 93%; Bovine: 93%; Dog: 86%; Rat: 86%
Protein Families:	Druggable Genome



[View online »](#)

Product images:



WB Suggested Anti-CDK5R2 Antibody; Titration:
1.0 ug/ml; Positive Control: NCI-H226 Whole Cell