

Product datasheet for **TA331310**

ATP6V0D1 Rabbit Polyclonal Antibody

Product data:

Product Type:	Primary Antibodies
Applications:	WB
Recommended Dilution:	WB
Reactivity:	Human, Mouse
Host:	Rabbit
Isotype:	IgG
Clonality:	Polyclonal
Immunogen:	The immunogen for Anti-ATP6V0D1 antibody is: synthetic peptide directed towards the C-terminal region of Human ATP6V0D1. Synthetic peptide located within the following region: KLLFEGAGSNPGDKTLEDRFFEHEVKLNKLAFLNQFHFGVFYAFVKLKEQ
Formulation:	Liquid. Purified antibody supplied in 1x PBS buffer with 0.09% (w/v) sodium azide and 2% sucrose. <i>Note that this product is shipped as lyophilized powder to China customers.</i>
Conjugation:	Unconjugated
Storage:	Store at -20°C as received.
Stability:	Stable for 12 months from date of receipt.
Predicted Protein Size:	39 kDa
Gene Name:	ATPase H ⁺ transporting V0 subunit d1
Database Link:	NP_004682 Entrez Gene 11972 Mouse Entrez Gene 9114 Human P61421



[View online »](#)

Background:

This gene encodes a component of vacuolar ATPase (V-ATPase), a multisubunit enzyme that mediates acidification of eukaryotic intracellular organelles. V-ATPase dependent organelle acidification is necessary for such intracellular processes as protein sorting, zymogen activation, receptor-mediated endocytosis, and synaptic vesicle proton gradient generation. V-ATPase is composed of a cytosolic V1 domain and a transmembrane V0 domain. The V1 domain consists of three A and three B subunits, two G subunits plus the C, D, E, F, and H subunits. The V1 domain contains the ATP catalytic site. The V0 domain consists of five different subunits: a, c, c', c'', and d. Additional isoforms of many of the V1 and V0 subunit proteins are encoded by multiple genes or alternatively spliced transcript variants. This encoded protein is known as the D subunit and is found ubiquitously.

Synonyms:

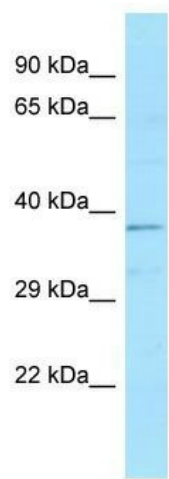
ATP6D; ATP6DV; P39; VATX; VMA6; VPATPD

Note:

Dog: 100%; Pig: 100%; Rat: 100%; Horse: 100%; Human: 100%; Mouse: 100%; Bovine: 100%; Rabbit: 100%; Zebrafish: 100%; Guinea pig: 100%

Protein Pathways:

Epithelial cell signaling in Helicobacter pylori infection, Lysosome, Metabolic pathways, Oxidative phosphorylation, Vibrio cholerae infection

Product images:

WB Suggested Anti-ATP6V0D1 Antibody; Titration: 1.0 ug/ml; Positive Control: Fetal kidney