

Product datasheet for **TA331309**

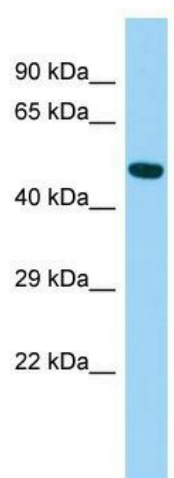
ARRDC4 Rabbit Polyclonal Antibody

Product data:

Product Type:	Primary Antibodies
Applications:	WB
Recommended Dilution:	WB
Reactivity:	Human
Host:	Rabbit
Isotype:	IgG
Clonality:	Polyclonal
Immunogen:	The immunogen for Anti-ARRDC4 antibody is: synthetic peptide directed towards the N-terminal region of Human ARRDC4. Synthetic peptide located within the following region: VGAEGRVKSLGLVLFEDERKGCYSSGETVAGHVLLEASEPVALRALRLEAQ
Formulation:	Liquid. Purified antibody supplied in 1x PBS buffer with 0.09% (w/v) sodium azide and 2% sucrose. <i>Note that this product is shipped as lyophilized powder to China customers.</i>
Conjugation:	Unconjugated
Storage:	Store at -20°C as received.
Stability:	Stable for 12 months from date of receipt.
Predicted Protein Size:	45 kDa
Gene Name:	arrestin domain containing 4
Database Link:	NP_899232 Entrez Gene 91947 Human Q8NCT1
Background:	The function of this protein remains unknown.
Synonyms:	FLJ36045
Note:	Dog: 100%; Pig: 100%; Human: 100%; Bovine: 100%; Rabbit: 100%; Guinea pig: 100%; Mouse: 93%



[View online »](#)

Product images:

Host: Rabbit; Target Name: ARRDC4; Sample Tissue: Fetal Liver lysates; Antibody Dilution: 1.0ug/ml