

Product datasheet for **TA331306**

ARH3 (ADPRHL2) Rabbit Polyclonal Antibody

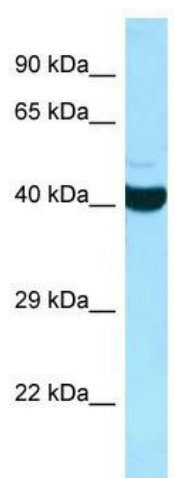
Product data:

Product Type:	Primary Antibodies
Applications:	WB
Recommended Dilution:	WB
Reactivity:	Human
Host:	Rabbit
Isotype:	IgG
Clonality:	Polyclonal
Immunogen:	The immunogen for Anti-ADPRHL2 antibody is: synthetic peptide directed towards the C-terminal region of Human ADPRHL2. Synthetic peptide located within the following region: SVLDARELGMEERPYPSSRLKIGELLDQASVTREEVSELGNGIAAFESV
Formulation:	Liquid. Purified antibody supplied in 1x PBS buffer with 0.09% (w/v) sodium azide and 2% sucrose.
Conjugation:	Unconjugated
Storage:	Store at -20°C as received.
Stability:	Stable for 12 months from date of receipt.
Predicted Protein Size:	39 kDa
Gene Name:	ADP-ribosylhydrolase like 2
Database Link:	NP_060295 Entrez Gene 54936 Human Q9NX46
Background:	This gene encodes a member of the ADP
Synonyms:	ARH3
Note:	Dog: 100%; Pig: 100%; Rat: 100%; Horse: 100%; Human: 100%; Mouse: 100%; Bovine: 100%; Guinea pig: 100%; Rabbit: 93%



[View online »](#)

Product images:



WB Suggested Anti-ADPRHL2 Antibody; Titration:
1.0 ug/ml; Positive Control: HepG2 Whole Cell