

## Product datasheet for **TA331304**

### ADAMTSL1 Rabbit Polyclonal Antibody

#### Product data:

Product Type:	Primary Antibodies
Applications:	WB
Recommended Dilution:	WB
Reactivity:	Human
Host:	Rabbit
Isotype:	IgG
Clonality:	Polyclonal
Immunogen:	The immunogen for Anti-ADAMTSL1 antibody is: synthetic peptide directed towards the N-terminal region of Human ADAMTSL1. Synthetic peptide located within the following region: EDRDGLWDAWGPWSECSRTCGGGASYSLRRCLSSKSCEGRNIRYRTCSNV
Formulation:	Liquid. Purified antibody supplied in 1x PBS buffer with 0.09% (w/v) sodium azide and 2% sucrose. <i>Note that this product is shipped as lyophilized powder to China customers.</i>
Purification:	Affinity Purified
Conjugation:	Unconjugated
Storage:	Store at -20°C as received.
Stability:	Stable for 12 months from date of receipt.
Predicted Protein Size:	57 kDa
Gene Name:	ADAMTS like 1
Database Link:	<a href="#">NP_443098</a> <a href="#">Entrez Gene 92949 Human</a> <a href="#">Q8N6G6</a>
Background:	This gene encodes a secreted protein and member of the ADAMTS (a disintegrin and metalloproteinase with thrombospondin motif) family. This protein lacks the metalloproteinase and disintegrin-like domains, which are typical of the ADAMTS family, but contains other ADAMTS domains, including the thrombospondin type 1 motif. This protein may have important functions in the extracellular matrix. Alternative splicing results in multiple transcript variants encoding distinct proteins.



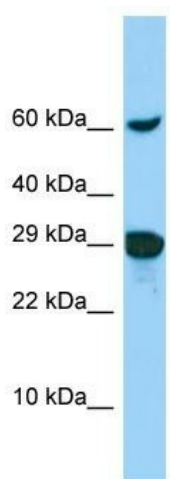
[View online »](#)

**Synonyms:** ADAMTSL-1; ADAMTSR1; C9orf94; PUNCTIN

**Note:** Dog: 100%; Rat: 100%; Horse: 100%; Human: 100%; Mouse: 100%; Bovine: 100%; Rabbit: 100%; Zebrafish: 100%; Pig: 90%

**Protein Families:** Secreted Protein

### Product images:



Host: Rabbit

Target Name: ADAMTSL1

Sample Tissue: COLO205 Cell Lysate

Antibody Dilution: 1.0µg/ml

Host: Rabbit; Target Name: ADAMTSL1; Sample Tissue: COLO205 Whole Cell lysates; Antibody Dilution: 1.0ug/ml