

Product datasheet for **TA331303**

ZC3H12D Rabbit Polyclonal Antibody

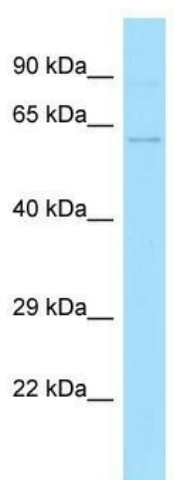
Product data:

Product Type:	Primary Antibodies
Applications:	WB
Recommended Dilution:	WB
Reactivity:	Human
Host:	Rabbit
Isotype:	IgG
Clonality:	Polyclonal
Immunogen:	The immunogen for Anti-ZC3H12D antibody is: synthetic peptide directed towards the C-terminal region of Human ZC3H12D. Synthetic peptide located within the following region: LSLPSPESQFSPGDLPPPPGLQLQPRGEHRPRDLHGDLLSPRRPPDDPWA
Formulation:	Liquid. Purified antibody supplied in 1x PBS buffer with 0.09% (w/v) sodium azide and 2% sucrose.
Conjugation:	Unconjugated
Storage:	Store at -20°C as received.
Stability:	Stable for 12 months from date of receipt.
Predicted Protein Size:	58 kDa
Gene Name:	zinc finger CCCH-type containing 12D
Database Link:	NP_997243 Entrez Gene 340152 Human A2A288
Background:	ZC3H12D may regulate cell growth likely by suppressing RB1 phosphorylation and function as RNase and regulate the levels of target RNA species Potential. ZC3H12D serve as a tumor suppressor in certain leukemia cells. Overexpression inhibits the G1 to S phase progression through suppression of RB1 phosphorylation.
Synonyms:	C6orf95; dj281H8.1; MCP1P4; p34; TFL
Note:	Human: 100%



[View online »](#)

Product images:



WB Suggested Anti-ZC3H12D Antibody; Titration:
1.0 ug/ml; Positive Control: Jurkat Whole Cell