

## Product datasheet for **TA331302**

### TRAPPC3 Rabbit Polyclonal Antibody

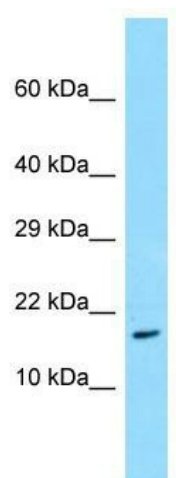
#### Product data:

Product Type:	Primary Antibodies
Applications:	WB
Recommended Dilution:	WB
Reactivity:	Human
Host:	Rabbit
Isotype:	IgG
Clonality:	Polyclonal
Immunogen:	The immunogen for Anti-TRAPPC3 antibody is: synthetic peptide directed towards the N-terminal region of Human TRAPPC3. Synthetic peptide located within the following region: TQLCKDYENDEVDNKQLDKMGFNIGVRLIEDFLARSNVGRCHDFRETADV
Formulation:	Liquid. Purified antibody supplied in 1x PBS buffer with 0.09% (w/v) sodium azide and 2% sucrose.
Conjugation:	Unconjugated
Storage:	Store at -20°C as received.
Stability:	Stable for 12 months from date of receipt.
Predicted Protein Size:	20 kDa
Gene Name:	trafficking protein particle complex 3
Database Link:	<a href="#">NP_055223</a> <a href="#">Entrez Gene 27095 Human</a> <a href="#">O43617</a>
Background:	TRAPPC3 is a component of the TRAPP complex, which is involved in tethering of transport vesicles to the cis-Golgi membrane.
Synonyms:	BET3
Note:	Dog: 100%; Pig: 100%; Rat: 100%; Horse: 100%; Human: 100%; Mouse: 100%; Bovine: 100%; Rabbit: 100%; Guinea pig: 100%; Zebrafish: 93%; Yeast: 79%



[View online »](#)

Product images:



WB Suggested Anti-TRAPPC3 Antibody; Titration:  
1.0 ug/ml; Positive Control: Placenta