

## Product datasheet for **TA331301**

### TOP1MT Rabbit Polyclonal Antibody

#### Product data:

Product Type:	Primary Antibodies
Applications:	WB
Recommended Dilution:	WB
Reactivity:	Human
Host:	Rabbit
Isotype:	IgG
Clonality:	Polyclonal
Immunogen:	The immunogen for Anti-TOP1MT antibody is: synthetic peptide directed towards the C-terminal region of Human TOP1MT. Synthetic peptide located within the following region: KKRRLLLEKLQEQLAQLSVQATDKEENKQVALGTSKLNLYLDPRIASIAWCKR
Formulation:	Liquid. Purified antibody supplied in 1x PBS buffer with 0.09% (w/v) sodium azide and 2% sucrose. <i>Note that this product is shipped as lyophilized powder to China customers.</i>
Conjugation:	Unconjugated
Storage:	Store at -20°C as received.
Stability:	Stable for 12 months from date of receipt.
Predicted Protein Size:	70 kDa
Gene Name:	topoisomerase (DNA) I, mitochondrial
Database Link:	<a href="#">NP_443195</a> <a href="#">Entrez Gene 116447 Human</a> <a href="#">Q969P6</a>
Background:	This gene encodes a mitochondrial DNA topoisomerase that plays a role in the modification of DNA topology. The encoded protein is a type IB topoisomerase and catalyzes the transient breaking and rejoining of DNA to relieve tension and DNA supercoiling generated in the mitochondrial genome during replication and transcription. Alternatively spliced transcript variants encoding multiple isoforms have been observed for this gene.
Synonyms:	2900052H09Rik; mitochondrial; mitochondrial topoisomerase I; topoisomerase (DNA) I

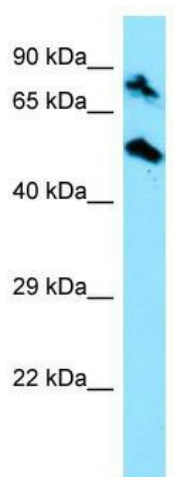


[View online »](#)

**Note:** Rat: 100%; Human: 100%; Mouse: 100%; Pig: 92%; Guinea pig: 92%; Horse: 86%; Dog: 85%; Bovine: 85%; Rabbit: 85%; Zebrafish: 85%; Yeast: 79%

**Protein Families:** Druggable Genome

**Product images:**



WB Suggested Anti-TOP1MT Antibody; Titration: 1.0 ug/ml; Positive Control: HepG2 Whole Cell