

## Product datasheet for **TA331300**

### TIGIT Rabbit Polyclonal Antibody

#### Product data:

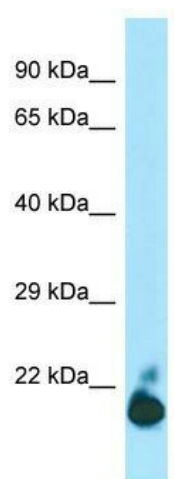
Product Type:	Primary Antibodies
Applications:	WB
Recommended Dilution:	WB
Reactivity:	Human
Host:	Rabbit
Isotype:	IgG
Clonality:	Polyclonal
Immunogen:	The immunogen for Anti-TIGIT antibody is: synthetic peptide directed towards the C-terminal region of Human TIGIT. Synthetic peptide located within the following region: ALRIHSVEGDLRRKSAGQEEWSPSAPSPPGSCVQAEAAPAGLCGEQRGED
Formulation:	Liquid. Purified antibody supplied in 1x PBS buffer with 0.09% (w/v) sodium azide and 2% sucrose. <i>Note that this product is shipped as lyophilized powder to China customers.</i>
Conjugation:	Unconjugated
Storage:	Store at -20°C as received.
Stability:	Stable for 12 months from date of receipt.
Predicted Protein Size:	24 kDa
Gene Name:	T-cell immunoreceptor with Ig and ITIM domains
Database Link:	<a href="#">NP_776160</a> <a href="#">Entrez Gene 201633 Human</a> <a href="#">Q495A1</a>
Background:	This gene encodes a member of the PVR (poliovirus receptor) family of immunoglobulin proteins. The product of this gene is expressed on several classes of T cells including follicular B helper T cells (TFH). The protein has been shown to bind PVR with high affinity; this binding is thought to assist interactions between TFH and dendritic cells to regulate T cell dependent B cell responses.
Synonyms:	VSIG9; VSTM3; WUCAM
Note:	Human: 100%



[View online »](#)

Protein Families: Transmembrane

### Product images:



WB Suggested Anti-TIGIT Antibody; Titration: 1.0 ug/ml; Positive Control: HepG2 Whole Cell