

Product datasheet for **TA331299**

Spaca3 Rabbit Polyclonal Antibody

Product data:

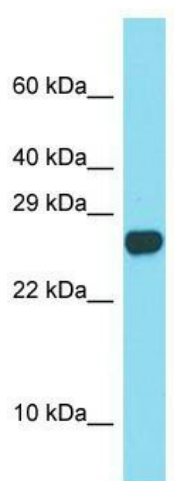
Product Type:	Primary Antibodies
Applications:	WB
Recommended Dilution:	WB
Reactivity:	Mouse
Host:	Rabbit
Isotype:	IgG
Clonality:	Polyclonal
Immunogen:	The immunogen for Anti-Spaca3 antibody is: synthetic peptide directed towards the C-terminal region of Mouse Spaca3. Synthetic peptide located within the following region: RIYCTDLLNNDLKDSIVCAMKIVQEPLGLGYWEAWRHHQCGRDLSDWVD
Formulation:	Liquid. Purified antibody supplied in 1x PBS buffer with 0.09% (w/v) sodium azide and 2% sucrose. <i>Note that this product is shipped as lyophilized powder to China customers.</i>
Purification:	Affinity Purified
Conjugation:	Unconjugated
Storage:	Store at -20°C as received.
Stability:	Stable for 12 months from date of receipt.
Predicted Protein Size:	24 kDa
Gene Name:	sperm acrosome associated 3
Database Link:	NP_083643 Entrez Gene 75622 Mouse Q9D9X8
Background:	Spaca3 is a sperm surface membrane protein that may be involved in sperm-egg plasma membrane adhesion and fusion during fertilization. It could be a potential receptor for the egg oligosaccharide residue N-acetylglucosamine, which is present in the extracellular matrix over the egg plasma membrane. The processed form has no detectable bacteriolytic activity in vitro?
Synonyms:	1700025M08Rik; ALLP17; CT54; LYC3; LYZL3; MGC119058; SLLP1; SPRASA



[View online »](#)

Note: Horse: 100%; Human: 100%; Pig: 93%; Rat: 92%; Dog: 86%; Goat: 86%; Sheep: 86%; Bovine: 86%; Rabbit: 86%; Mouse: 79%

Product images:



Host: Rabbit; Target Name: Spaca3; Sample Tissue: Mouse Spleen lysates; Antibody Dilution: 1.0ug/ml