

Product datasheet for TA331297

Syntrophin gamma 2 (SNTG2) Rabbit Polyclonal Antibody

Product data:

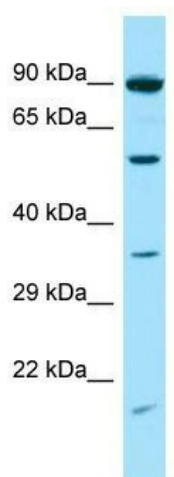
Product Type:	Primary Antibodies
Applications:	WB
Recommended Dilution:	WB
Reactivity:	Human
Host:	Rabbit
Isotype:	IgG
Clonality:	Polyclonal
Immunogen:	The immunogen for Anti-SNTG2 antibody is: synthetic peptide directed towards the C-terminal region of Human SNTG2. Synthetic peptide located within the following region: NVLWRFKFSQLKGSSDDGKTRVKLLFQNLDTKQIETKELEFQDLRAVLHC
Formulation:	Liquid. Purified antibody supplied in 1x PBS buffer with 0.09% (w/v) sodium azide and 2% sucrose.
Purification:	Affinity Purified
Conjugation:	Unconjugated
Storage:	Store at -20°C as received.
Stability:	Stable for 12 months from date of receipt.
Predicted Protein Size:	59 kDa
Gene Name:	syntrophin gamma 2
Database Link:	NP_061841 Entrez Gene 54221 Human Q9NY99
Background:	This gene encodes a protein belonging to the syntrophin family. Syntrophins are cytoplasmic peripheral membrane proteins that bind to components of mechanosensitive sodium channels and the extreme carboxy-terminal domain of dystrophin and dystrophin-related proteins. The PDZ domain of this protein product interacts with a protein component of a mechanosensitive sodium channel that affects channel gating. Absence or reduction of this protein product has been associated with Duchenne muscular dystrophy. There is evidence of alternative splicing yet the full-length nature of these variants has not been described.


[View online »](#)

Synonyms: G2SYN; SYN5

Note: Rat: 100%; Horse: 100%; Human: 100%; Mouse: 100%; Zebrafish: 100%; Dog: 93%; Pig: 86%; Guinea pig: 86%; Bovine: 79%; Rabbit: 79%

Product images:



Host: Rabbit; Target Name: SNTG2; Sample Tissue: HT1080 Whole Cell lysates; Antibody Dilution: 1.0ug/ml