

## Product datasheet for **TA331296**

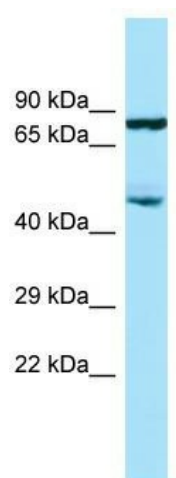
### SMAP2 Rabbit Polyclonal Antibody

#### Product data:

Product Type:	Primary Antibodies
Applications:	WB
Recommended Dilution:	WB
Reactivity:	Human
Host:	Rabbit
Isotype:	IgG
Clonality:	Polyclonal
Immunogen:	The immunogen for Anti-SMAP2 antibody is: synthetic peptide directed towards the C-terminal region of Human SMAP2. Synthetic peptide located within the following region: KVVGSMPTAGSAGSVPENLNLFPPEPGSKSEEIGKKQLSKDSILSLYGSQT
Formulation:	Liquid. Purified antibody supplied in 1x PBS buffer with 0.09% (w/v) sodium azide and 2% sucrose. <i>Note that this product is shipped as lyophilized powder to China customers.</i>
Conjugation:	Unconjugated
Storage:	Store at -20°C as received.
Stability:	Stable for 12 months from date of receipt.
Predicted Protein Size:	47 kDa
Gene Name:	small ArfGAP2
Database Link:	<a href="#">NP_073570</a> <a href="#">Entrez Gene 64744 Human Q8WU79</a>
Background:	SMAP2 is a GTPase activating protein that acts on ARF1. SMAP2 can also activate ARF6 (in vitro). It may play a role in clathrin-dependent retrograde transport from early endosomes to the trans-Golgi network.
Synonyms:	SMAP1L
Note:	Human: 100%; Rabbit: 100%; Dog: 93%; Pig: 93%; Rat: 93%; Horse: 93%; Mouse: 93%; Guinea pig: 93%; Bovine: 86%
Protein Pathways:	Endocytosis



[View online »](#)

**Product images:**

WB Suggested Anti-SMAP2 Antibody; Titration:  
1.0 ug/ml; Positive Control: THP-1 Whole Cell