

## Product datasheet for **TA331295**

### SMAP2 Rabbit Polyclonal Antibody

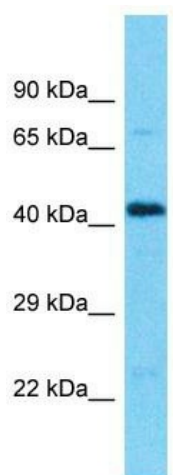
#### Product data:

Product Type:	Primary Antibodies
Applications:	WB
Recommended Dilution:	WB
Reactivity:	Human
Host:	Rabbit
Isotype:	IgG
Clonality:	Polyclonal
Immunogen:	The immunogen for Anti-SMAP2 antibody is: synthetic peptide directed towards the N-terminal region of Human SMAP2. Synthetic peptide located within the following region: LPETFRRPQIDPAVEGFIRDKYEKKKYMDRSLDINAFRKEKDDKWKRGSE
Formulation:	Liquid. Purified antibody supplied in 1x PBS buffer with 0.09% (w/v) sodium azide and 2% sucrose. <i>Note that this product is shipped as lyophilized powder to China customers.</i>
Conjugation:	Unconjugated
Storage:	Store at -20°C as received.
Stability:	Stable for 12 months from date of receipt.
Predicted Protein Size:	47 kDa
Gene Name:	small ArfGAP2
Database Link:	<a href="#">NP_073570</a> <a href="#">Entrez Gene 64744 Human Q8WU79</a>
Background:	SMAP2 is a GTPase activating protein that acts on ARF1. It can also activate ARF6 and may play a role in clathrin-dependent retrograde transport from early endosomes to the trans-Golgi network.
Synonyms:	SMAP1L
Note:	Dog: 100%; Pig: 100%; Rat: 100%; Human: 100%; Rabbit: 100%; Horse: 93%; Bovine: 93%; Guinea pig: 93%; Mouse: 92%
Protein Pathways:	Endocytosis



[View online »](#)

## Product images:



Host: Rabbit  
Target Name: SMAP2  
Sample Tissue: U937 Cell Lysate  
Antibody Dilution: 1.0µg/ml

Host: Rabbit; Target Name: SMAP2; Sample  
Tissue: U937 Whole Cell lysates; Antibody  
Dilution: 1.0ug/ml