

Product datasheet for **TA331294**

SLC13A4 Rabbit Polyclonal Antibody

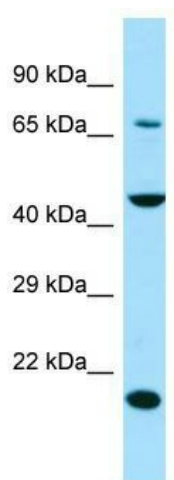
Product data:

Product Type:	Primary Antibodies
Applications:	WB
Recommended Dilution:	WB
Reactivity:	Human
Host:	Rabbit
Isotype:	IgG
Clonality:	Polyclonal
Immunogen:	The immunogen for Anti-SLC13A4 antibody is: synthetic peptide directed towards the middle region of Human SLC13A4. Synthetic peptide located within the following region: NPIKTANQHQGKKQHPSQEKPQVLTPSPRKQKLNRYRSHHDQMICKCLS
Formulation:	Liquid. Purified antibody supplied in 1x PBS buffer with 0.09% (w/v) sodium azide and 2% sucrose.
Conjugation:	Unconjugated
Storage:	Store at -20°C as received.
Stability:	Stable for 12 months from date of receipt.
Predicted Protein Size:	69 kDa
Gene Name:	solute carrier family 13 member 4
Database Link:	NP_036582 Entrez Gene 26266 Human Q9UKG4
Background:	SLC13A4 is a sodium/sulfate cotransporter that mediates sulfate reabsorption in the high endothelial venules (HEV).
Synonyms:	NAS2; SUT-1; SUT1
Note:	Human: 100%; Dog: 91%; Bovine: 90%; Horse: 85%; Rat: 79%; Mouse: 79%
Protein Families:	Transmembrane



[View online »](#)

Product images:



WB Suggested Anti-SLC13A4 Antibody; Titration:
1.0 ug/ml; Positive Control: Jurkat Whole Cell