

## Product datasheet for **TA331293**

### SCUBE3 Rabbit Polyclonal Antibody

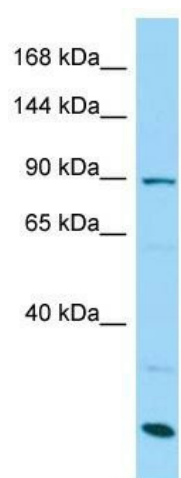
#### Product data:

Product Type:	Primary Antibodies
Applications:	WB
Recommended Dilution:	WB
Reactivity:	Human
Host:	Rabbit
Isotype:	IgG
Clonality:	Polyclonal
Immunogen:	The immunogen for Anti-SCUBE3 antibody is: synthetic peptide directed towards the N-terminal region of Human SCUBE3. Synthetic peptide located within the following region: MNCMNKNHGCAHICRETPKGGIACECRPGFELTKNQRDCKLTCNYGNGGC
Formulation:	Liquid. Purified antibody supplied in 1x PBS buffer with 0.09% (w/v) sodium azide and 2% sucrose. <i>Note that this product is shipped as lyophilized powder to China customers.</i>
Conjugation:	Unconjugated
Storage:	Store at -20°C as received.
Stability:	Stable for 12 months from date of receipt.
Predicted Protein Size:	96 kDa
Gene Name:	signal peptide, CUB domain and EGF like domain containing 3
Database Link:	<a href="#">NP_689966</a> <a href="#">Entrez Gene 222663 Human</a> <a href="#">Q8IX30</a>
Background:	The function of this protein remains unknown.
Synonyms:	CEGF3
Note:	Dog: 100%; Pig: 100%; Rat: 100%; Horse: 100%; Human: 100%; Mouse: 100%; Bovine: 100%; Rabbit: 100%; Guinea pig: 100%; Zebrafish: 86%
Protein Families:	Druggable Genome, Secreted Protein



[View online »](#)

## Product images:



WB Suggested Anti-SCUBE3 Antibody; Titration:  
1.0 ug/ml; Positive Control: MCF7 Whole Cell