

Product datasheet for **TA331292**

RTN4RL2 Rabbit Polyclonal Antibody

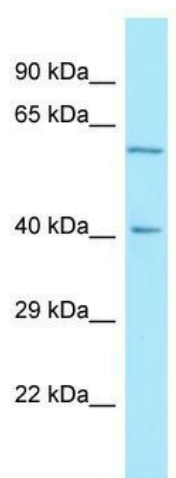
Product data:

Product Type:	Primary Antibodies
Applications:	WB
Recommended Dilution:	WB
Reactivity:	Human
Host:	Rabbit
Isotype:	IgG
Clonality:	Polyclonal
Immunogen:	The immunogen for Anti-RTN4RL2 antibody is: synthetic peptide directed towards the C-terminal region of Human RTN4RL2. Synthetic peptide located within the following region: DYWGGYGGEDQRGEQMCPGAACQAPPDSRGPALSAGLPSPLLCLLLLVPH
Formulation:	Liquid. Purified antibody supplied in 1x PBS buffer with 0.09% (w/v) sodium azide and 2% sucrose. <i>Note that this product is shipped as lyophilized powder to China customers.</i>
Conjugation:	Unconjugated
Storage:	Store at -20°C as received.
Stability:	Stable for 12 months from date of receipt.
Predicted Protein Size:	38 kDa
Gene Name:	reticulon 4 receptor-like 2
Database Link:	NP_848665 Entrez Gene 349667 Human Q86UN3
Background:	RTN4RL2 may play a role in regulating axonal regeneration and plasticity in the adult central nervous system.
Synonyms:	NgR2; NGRH1
Note:	Dog: 100%; Rat: 100%; Horse: 100%; Human: 100%; Mouse: 100%; Bovine: 85%
Protein Families:	Druggable Genome



[View online »](#)

Product images:



WB Suggested Anti-RTN4RL2 Antibody; Titration:
1.0 ug/ml; Positive Control: A549 Whole Cell