

## Product datasheet for **TA331290**

### **RAB30 Rabbit Polyclonal Antibody**

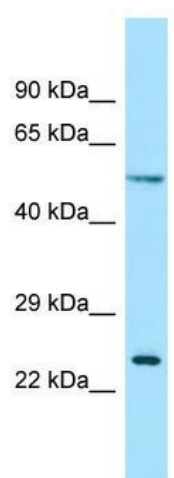
#### **Product data:**

Product Type:	Primary Antibodies
Applications:	WB
Recommended Dilution:	WB
Reactivity:	Human
Host:	Rabbit
Isotype:	IgG
Clonality:	Polyclonal
Immunogen:	The immunogen for Anti-RAB30 antibody is: synthetic peptide directed towards the C-terminal region of Human RAB30. Synthetic peptide located within the following region: EIEQYASNKIVITVLVGNKIDLAERREVSQQRAEEFSEAQDMYYLETSAKE
Formulation:	Liquid. Purified antibody supplied in 1x PBS buffer with 0.09% (w/v) sodium azide and 2% sucrose. <i>Note that this product is shipped as lyophilized powder to China customers.</i>
Conjugation:	Unconjugated
Storage:	Store at -20°C as received.
Stability:	Stable for 12 months from date of receipt.
Predicted Protein Size:	23 kDa
Gene Name:	RAB30, member RAS oncogene family
Database Link:	<a href="#">NP_055303</a> <a href="#">Entrez Gene 27314 Human Q15771</a>
Background:	The function of this protein remains unknown.
Synonyms:	member RAS oncogene family; RAB30
Note:	Dog: 100%; Pig: 100%; Rat: 100%; Goat: 100%; Horse: 100%; Human: 100%; Mouse: 100%; Bovine: 100%; Rabbit: 100%; Guinea pig: 100%
Protein Families:	Druggable Genome



[View online »](#)

## Product images:



WB Suggested Anti-RAB30 Antibody; Titration: 1.0 ug/ml; Positive Control: Fetal Lung