

## Product datasheet for **TA331289**

### **RAB7L1 (RAB29) Rabbit Polyclonal Antibody**

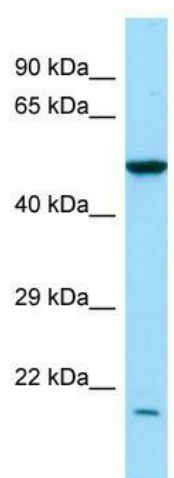
#### **Product data:**

<b>Product Type:</b>	Primary Antibodies
<b>Applications:</b>	WB
<b>Recommended Dilution:</b>	WB
<b>Reactivity:</b>	Human
<b>Host:</b>	Rabbit
<b>Isotype:</b>	IgG
<b>Clonality:</b>	Polyclonal
<b>Immunogen:</b>	The immunogen for Anti-RAB7L1 antibody is: synthetic peptide directed towards the N-terminal region of Human RAB7L1. Synthetic peptide located within the following region: RDHLFKVLVVGDAAVGKTSLVQRYSQDSFSKHYKSTVGGQERFTSMTRLY
<b>Formulation:</b>	Liquid. Purified antibody supplied in 1x PBS buffer with 0.09% (w/v) sodium azide and 2% sucrose. <i>Note that this product is shipped as lyophilized powder to China customers.</i>
<b>Conjugation:</b>	Unconjugated
<b>Storage:</b>	Store at -20°C as received.
<b>Stability:</b>	Stable for 12 months from date of receipt.
<b>Predicted Protein Size:</b>	20 kDa
<b>Gene Name:</b>	RAB29, member RAS oncogene family
<b>Database Link:</b>	<a href="#">NP_001129135</a> <a href="#">Entrez Gene 8934 Human</a> <a href="#">O14966</a>
<b>Background:</b>	The function of this protein remains unknown.
<b>Synonyms:</b>	RAB7L; RAB7L1
<b>Note:</b>	Pig: 100%; Rat: 100%; Horse: 100%; Human: 100%; Mouse: 100%; Bovine: 100%; Rabbit: 100%; Guinea pig: 92%; Dog: 86%
<b>Protein Families:</b>	Druggable Genome



[View online »](#)

## Product images:



WB Suggested Anti-RAB7L1 Antibody; Titration: 1.0 ug/ml; Positive Control: MCF7 Whole Cell  
RAB7L1 is supported by BioGPS gene expression data to be expressed in MCF7