

Product datasheet for **TA331288**

RAB7L1 (RAB29) Rabbit Polyclonal Antibody

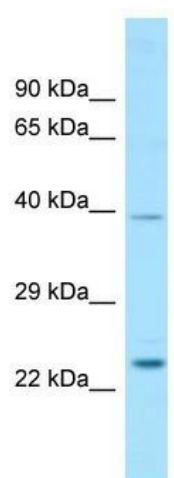
Product data:

Product Type:	Primary Antibodies
Applications:	WB
Recommended Dilution:	WB
Reactivity:	Human
Host:	Rabbit
Isotype:	IgG
Clonality:	Polyclonal
Immunogen:	The immunogen for Anti-RAB7L1 antibody is: synthetic peptide directed towards the C-terminal region of Human RAB7L1. Synthetic peptide located within the following region: QDLDSKLTLPNGEPVPCLLLANKCDLSPWAVSRDQIDRFSKENGFTGWTE
Formulation:	Liquid. Purified antibody supplied in 1x PBS buffer with 0.09% (w/v) sodium azide and 2% sucrose. <i>Note that this product is shipped as lyophilized powder to China customers.</i>
Conjugation:	Unconjugated
Storage:	Store at -20°C as received.
Stability:	Stable for 12 months from date of receipt.
Predicted Protein Size:	23 kDa
Gene Name:	RAB29, member RAS oncogene family
Database Link:	NP_003920 Entrez Gene 8934 Human O14966
Background:	The function of this protein remains unknown.
Synonyms:	RAB7L; RAB7L1
Note:	Pig: 100%; Rat: 100%; Human: 100%; Mouse: 100%; Rabbit: 100%; Guinea pig: 100%; Dog: 93%; Horse: 93%; Bovine: 93%
Protein Families:	Druggable Genome



[View online »](#)

Product images:



WB Suggested Anti-RAB7L1 Antibody; Titration:
1.0 ug/ml; Positive Control: Placenta