

Product datasheet for **TA331287**

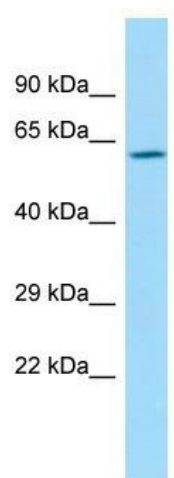
PPM1H Rabbit Polyclonal Antibody

Product data:

Product Type:	Primary Antibodies
Applications:	WB
Recommended Dilution:	WB
Reactivity:	Human
Host:	Rabbit
Isotype:	IgG
Clonality:	Polyclonal
Immunogen:	The immunogen for Anti-PPM1H antibody is: synthetic peptide directed towards the N-terminal region of Human PPM1H. Synthetic peptide located within the following region: TRRLPWATGYAEVINAGKSTHNEDQASCEVLTVKKKAGAVTSTPNRNSSK
Formulation:	Liquid. Purified antibody supplied in 1x PBS buffer with 0.09% (w/v) sodium azide and 2% sucrose. <i>Note that this product is shipped as lyophilized powder to China customers.</i>
Conjugation:	Unconjugated
Storage:	Store at -20°C as received.
Stability:	Stable for 12 months from date of receipt.
Predicted Protein Size:	56 kDa
Gene Name:	protein phosphatase, Mg ²⁺ /Mn ²⁺ dependent 1H
Database Link:	NP_065751 Entrez Gene 57460 Human Q9ULR3
Background:	The function of this protein remains unknown.
Synonyms:	ARHCL1; NERPP-2C; URCC2
Note:	Dog: 100%; Pig: 100%; Rat: 100%; Horse: 100%; Human: 100%; Mouse: 100%; Bovine: 100%; Rabbit: 100%; Guinea pig: 100%; Zebrafish: 79%
Protein Families:	Phosphatase



[View online »](#)

Product images:

Host: Rabbit; Target Name: PPM1H; Sample Tissue: HepG2 Whole Cell lysates; Antibody Dilution: 1.0ug/ml; PPM1H is supported by BioGPS gene expression data to be expressed in HepG2