

Product datasheet for **TA331286**

PPFIA4 Rabbit Polyclonal Antibody

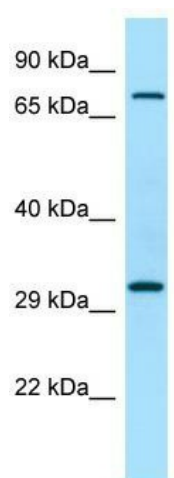
Product data:

Product Type:	Primary Antibodies
Applications:	WB
Recommended Dilution:	WB
Reactivity:	Human
Host:	Rabbit
Isotype:	IgG
Clonality:	Polyclonal
Immunogen:	The immunogen for Anti-PPFIA4 antibody is: synthetic peptide directed towards the N-terminal region of Human PPFIA4. Synthetic peptide located within the following region: AQDLDRMGVMTLPSDLRKHRRKLLSPVSREENREDKATIKCETSPSSPR
Formulation:	Liquid. Purified antibody supplied in 1x PBS buffer with 0.09% (w/v) sodium azide and 2% sucrose. <i>Note that this product is shipped as lyophilized powder to China customers.</i>
Conjugation:	Unconjugated
Storage:	Store at -20°C as received.
Stability:	Stable for 12 months from date of receipt.
Predicted Protein Size:	78 kDa
Gene Name:	PTPRF interacting protein alpha 4
Database Link:	NP_055868 Entrez Gene 8497 Human O75335
Background:	PPFIA4, or liprin-alpha-4, belongs to the liprin-alpha gene family. See liprin-alpha-1 (LIP1, or PPFIA1; MIM 611054) for background on liprins.
Synonyms:	alpha 4; f polypeptide (PTPRF); interacting protein (liprin); Liprin-alpha4; liprin alpha4; protein tyrosine phosphatase; receptor type
Note:	Dog: 100%; Pig: 100%; Rat: 100%; Horse: 100%; Human: 100%; Mouse: 100%; Rabbit: 100%; Guinea pig: 100%; Bovine: 93%
Protein Families:	Druggable Genome, Phosphatase



[View online »](#)

Product images:



WB Suggested Anti-PPFIA4 Antibody; Titration: 1.0 ug/ml; Positive Control: RPMI-8226 Whole Cell