

Product datasheet for **TA331285**

PLSCR4 Rabbit Polyclonal Antibody

Product data:

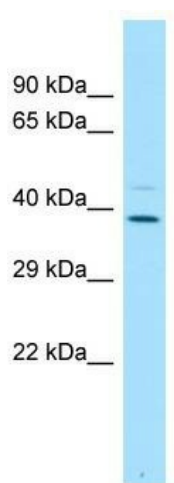
Product Type:	Primary Antibodies
Applications:	WB
Recommended Dilution:	WB
Reactivity:	Human
Host:	Rabbit
Isotype:	IgG
Clonality:	Polyclonal
Immunogen:	The immunogen for Anti-PLSCR4 antibody is: synthetic peptide directed towards the C-terminal region of Human PLSCR4. Synthetic peptide located within the following region: HWNLCRAVYSIQNEKKENVMRVRGPCSTYGCGSDSVFEVKSLDGISNIGS
Formulation:	Liquid. Purified antibody supplied in 1x PBS buffer with 0.09% (w/v) sodium azide and 2% sucrose. <i>Note that this product is shipped as lyophilized powder to China customers.</i>
Conjugation:	Unconjugated
Storage:	Store at -20°C as received.
Stability:	Stable for 12 months from date of receipt.
Predicted Protein Size:	37 kDa
Gene Name:	phospholipid scramblase 4
Database Link:	NP_065086 Entrez Gene 57088 Human Q9NRQ2
Background:	PLSCR4 may mediate accelerated ATP-independent bidirectional transbilayer migration of phospholipids upon binding calcium ions that results in a loss of phospholipid asymmetry in the plasma membrane. PLSCR4 may play a central role in the initiation of fibrin clot formation, in the activation of mast cells and in the recognition of apoptotic and injured cells by the reticuloendothelial system.
Synonyms:	TRA1



[View online »](#)

Note: Dog: 100%; Pig: 100%; Horse: 100%; Human: 100%; Rabbit: 100%; Guinea pig: 100%; Rat: 92%;
Mouse: 92%; Bovine: 85%

Product images:



WB Suggested Anti-PLSCR4 Antibody; Titration:
1.0 ug/ml; Positive Control: Fetal Lung