

## Product datasheet for **TA331284**

### phospholipid scramblase 2 (PLSCR2) Rabbit Polyclonal Antibody

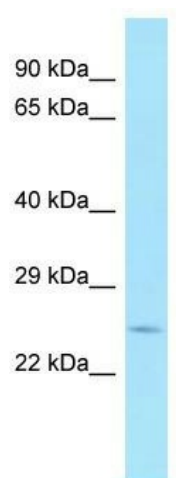
#### Product data:

Product Type:	Primary Antibodies
Applications:	WB
Recommended Dilution:	WB
Reactivity:	Human
Host:	Rabbit
Isotype:	IgG
Clonality:	Polyclonal
Immunogen:	The immunogen for Anti-PLSCR2 antibody is: synthetic peptide directed towards the C-terminal region of Human PLSCR2. Synthetic peptide located within the following region: PVGYVTQTWHPCLTKFTIKNQKREDVLKISGPCIVCSCIAGVDFEITSLD
Formulation:	Liquid. Purified antibody supplied in 1x PBS buffer with 0.09% (w/v) sodium azide and 2% sucrose.
Conjugation:	Unconjugated
Storage:	Store at -20°C as received.
Stability:	Stable for 12 months from date of receipt.
Predicted Protein Size:	25 kDa
Gene Name:	phospholipid scramblase 2
Database Link:	<a href="#">NP_065092</a> <a href="#">Entrez Gene 57047 Human</a> <a href="#">Q9NRY7</a>
Background:	This gene encodes a member of the phospholipid scramblase family. Phospholipid scramblases are membrane proteins that mediate calcium-dependent, non-specific movement of plasma membrane phospholipids and phosphatidylserine exposure. The encoded protein contains a low affinity calcium binding motif and may play a role in blood coagulation and apoptosis. Alternatively spliced transcript variants encoding multiple isoforms have been observed for this gene.
Synonyms:	phospholipid scramblase 2
Note:	Human: 100%; Rabbit: 79%; Pig: 75%; Rat: 75%



[View online »](#)

Product images:



WB Suggested Anti-PLSCR2 Antibody; Titration:  
1.0 ug/ml; Positive Control: Fetal Heart