

Product datasheet for **TA331282**

PGRP1A (PGLYRP3) Rabbit Polyclonal Antibody

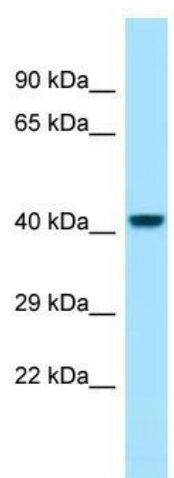
Product data:

Product Type:	Primary Antibodies
Applications:	WB
Recommended Dilution:	WB
Reactivity:	Human
Host:	Rabbit
Isotype:	IgG
Clonality:	Polyclonal
Immunogen:	The immunogen for Anti-PGLYRP3 antibody is: synthetic peptide directed towards the N-terminal region of Human PGLYRP3. Synthetic peptide located within the following region: SVCSQMLRGLQSHSVYTIGWCDVAYNFLVGDDGRVYEGVGWNIQGLHTQG
Formulation:	Liquid. Purified antibody supplied in 1x PBS buffer with 0.09% (w/v) sodium azide and 2% sucrose.
Conjugation:	Unconjugated
Storage:	Store at -20°C as received.
Stability:	Stable for 12 months from date of receipt.
Predicted Protein Size:	36 kDa
Gene Name:	peptidoglycan recognition protein 3
Database Link:	NP_443123 Entrez Gene 114771 Human Q96LB9
Background:	This gene encodes a peptidoglycan recognition protein, which belongs to the N-acetylmuramoyl-L-alanine amidase 2 family. These proteins are part of the innate immune system and recognize peptidoglycan, a ubiquitous component of bacterial cell walls. This protein binds to murein peptidoglycans of Gram-positive bacteria.
Synonyms:	PGLYRP1alpha; PGRP-1alpha; PGRPIA
Note:	Pig: 100%; Rat: 100%; Horse: 100%; Human: 100%; Mouse: 100%; Guinea pig: 100%; Bovine: 93%; Dog: 79%; Rabbit: 79%
Protein Families:	Druggable Genome



[View online »](#)

Product images:



WB Suggested Anti-PGLYRP3 Antibody; Titration:
1.0 ug/ml; Positive Control: Fetal Heart