

## Product datasheet for **TA331280**

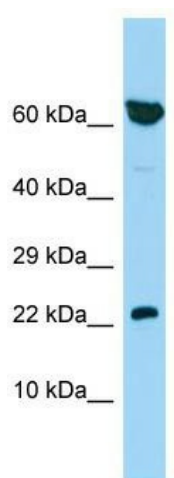
### **PBOV1 Rabbit Polyclonal Antibody**

#### **Product data:**

Product Type:	Primary Antibodies
Applications:	WB
Recommended Dilution:	WB
Reactivity:	Human
Host:	Rabbit
Isotype:	IgG
Clonality:	Polyclonal
Immunogen:	The immunogen for Anti-PBOV1 antibody is: synthetic peptide directed towards the N-terminal region of Human PBOV1. Synthetic peptide located within the following region: RHRLSNFPRLPGILAPETVLLPFCYKVFRRKKEKVKRSQKATEFIDYSIEQ
Formulation:	Liquid. Purified antibody supplied in 1x PBS buffer with 0.09% (w/v) sodium azide and 2% sucrose.
Conjugation:	Unconjugated
Storage:	Store at -20°C as received.
Stability:	Stable for 12 months from date of receipt.
Predicted Protein Size:	16 kDa
Gene Name:	prostate and breast cancer overexpressed 1
Database Link:	<a href="#">NP_067648</a> <a href="#">Entrez Gene 59351 Human</a> <a href="#">Q9GZY1</a>
Background:	This intronless gene encodes a protein of unknown function. Its expression is up-regulated in some types of cancer, including prostate, breast, and bladder cancer.
Synonyms:	dj171N11.2; UC28; UROC28
Note:	Human: 100%



[View online »](#)

**Product images:**

Host: Rabbit; Target Name: PBOV1; Sample Tissue: 721\_B Whole Cell lysates; Antibody Dilution: 1.0ug/ml; PBOV1 is supported by BioGPS gene expression data to be expressed in 721\_B