

Product datasheet for TA331279

PALMD Rabbit Polyclonal Antibody

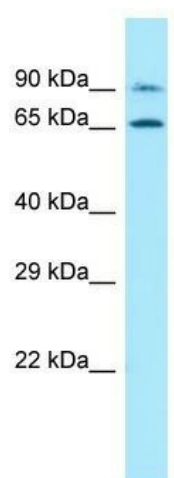
Product data:

Product Type:	Primary Antibodies
Applications:	WB
Recommended Dilution:	WB
Reactivity:	Human
Host:	Rabbit
Isotype:	IgG
Clonality:	Polyclonal
Immunogen:	The immunogen for Anti-PALMD antibody is: synthetic peptide directed towards the N-terminal region of Human PALMD. Synthetic peptide located within the following region: SIERTTEDIIRSVKVEREERAEESIEDIYANIPDLPKSYIPSRLRKEINE
Formulation:	Liquid. Purified antibody supplied in 1x PBS buffer with 0.09% (w/v) sodium azide and 2% sucrose. <i>Note that this product is shipped as lyophilized powder to China customers.</i>
Conjugation:	Unconjugated
Storage:	Store at -20°C as received.
Stability:	Stable for 12 months from date of receipt.
Predicted Protein Size:	63 kDa
Gene Name:	palmdelphin
Database Link:	NP_060204 Entrez Gene 54873 Human Q9NP74
Background:	The function of this protein remains unknown.
Synonyms:	C1orf11; PALML
Note:	Human: 100%; Dog: 79%; Rat: 79%; Mouse: 79%



[View online »](#)

Product images:



WB Suggested Anti-PALMD Antibody; Titration:
1.0 ug/ml; Positive Control: Jurkat Whole Cell