

Product datasheet for **TA331276**

Nefm Rabbit Polyclonal Antibody

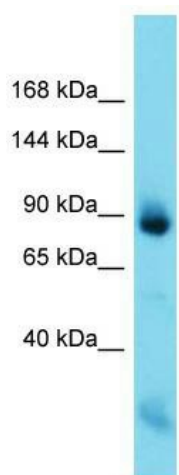
Product data:

Product Type:	Primary Antibodies
Applications:	WB
Recommended Dilution:	WB
Reactivity:	Rat
Host:	Rabbit
Isotype:	IgG
Clonality:	Polyclonal
Immunogen:	The immunogen for Anti-Nefm antibody is: synthetic peptide directed towards the C-terminal region of Rat Nefm. Synthetic peptide located within the following region: GGDGATKYITKSVTVTQKVEEHEETFEEKLVSTKKVEKVTSHAIKVEVTQ
Formulation:	Liquid. Purified antibody supplied in 1x PBS buffer with 0.09% (w/v) sodium azide and 2% sucrose. <i>Note that this product is shipped as lyophilized powder to China customers.</i>
Conjugation:	Unconjugated
Storage:	Store at -20°C as received.
Stability:	Stable for 12 months from date of receipt.
Predicted Protein Size:	92 kDa
Gene Name:	neurofilament, medium polypeptide
Database Link:	NP_058725 Entrez Gene 24588 Rat P12839
Background:	Nefm is a neuronal intermediate filament protein and an important component of the cytoskeleton.
Synonyms:	NEF3; NF-M; NFM
Note:	Dog: 100%; Pig: 100%; Rat: 100%; Horse: 100%; Human: 100%; Mouse: 100%; Sheep: 100%; Bovine: 100%; Rabbit: 100%; Guinea pig: 100%



[View online »](#)

Product images:



Host: Rabbit; Target Name: Nefm; Sample Tissue: Rat Muscle lysates; Antibody Dilution: 1.0ug/ml