

Product datasheet for **TA331275**

Neurofilament (NEFM) Rabbit Polyclonal Antibody

Product data:

Product Type:	Primary Antibodies
Applications:	WB
Recommended Dilution:	WB
Reactivity:	Human
Host:	Rabbit
Isotype:	IgG
Clonality:	Polyclonal
Immunogen:	The immunogen for Anti-NEFM antibody is: synthetic peptide directed towards the C-terminal region of Human NEFM. Synthetic peptide located within the following region: EVEGKEEVEQETKEKGSGREEEKGVVTNGLDLSPADEKKGDKSEEKVVV
Formulation:	Liquid. Purified antibody supplied in 1x PBS buffer with 0.09% (w/v) sodium azide and 2% sucrose. <i>Note that this product is shipped as lyophilized powder to China customers.</i>
Conjugation:	Unconjugated
Storage:	Store at -20°C as received.
Stability:	Stable for 12 months from date of receipt.
Predicted Protein Size:	59 kDa
Gene Name:	neurofilament, medium polypeptide
Database Link:	NP_001099011 Entrez Gene 4741 Human P07197
Background:	Neurofilaments are type IV intermediate filament heteropolymers composed of light, medium, and heavy chains. Neurofilaments comprise the axoskeleton and functionally maintain neuronal caliber. They may also play a role in intracellular transport to axons and dendrites. This gene encodes the medium neurofilament protein. This protein is commonly used as a biomarker of neuronal damage. Alternative splicing results in multiple transcript variants encoding distinct isoforms.
Synonyms:	NEF3; NF-M; NFM

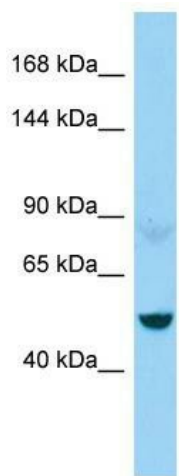


[View online »](#)

Note: Human: 100%; Sheep: 93%; Bovine: 93%; Rabbit: 93%; Dog: 86%; Rat: 86%; Horse: 86%

Protein Pathways: Amyotrophic lateral sclerosis (ALS)

Product images:



WB Suggested Anti-NEFM Antibody; Titration: 1.0 ug/ml; Positive Control: ACHN Whole Cell