

Product datasheet for **TA331273**

MYCT1 Rabbit Polyclonal Antibody

Product data:

Product Type:	Primary Antibodies
Applications:	WB
Recommended Dilution:	WB
Reactivity:	Human
Host:	Rabbit
Isotype:	IgG
Clonality:	Polyclonal
Immunogen:	The immunogen for Anti-MYCT1 antibody is: synthetic peptide directed towards the middle region of Human MYCT1. Synthetic peptide located within the following region: RRRRASAPISQWSSRRSRSSYTHGLNRTGFYRHSGCERRSNLSLASLTF
Formulation:	Liquid. Purified antibody supplied in 1x PBS buffer with 0.09% (w/v) sodium azide and 2% sucrose. <i>Note that this product is shipped as lyophilized powder to China customers.</i>
Conjugation:	Unconjugated
Storage:	Store at -20°C as received.
Stability:	Stable for 12 months from date of receipt.
Predicted Protein Size:	26 kDa
Gene Name:	myc target 1
Database Link:	NP_079383 Entrez Gene 80177 Human Q8N699
Background:	MYCT1 may regulate certain MYC target genes, MYC seems to be a direct upstream transcriptional activator. MYCT1 does not seem to significantly affect growth cell capacity. Overexpression seems to mediate many of the known phenotypic features associated with MYC, including promotion of apoptosis, alteration of morphology, enhancement of anchorage-independent growth, tumorigenic conversion, promotion of genomic instability, and inhibition of hematopoietic differentiation.
Synonyms:	MTLC

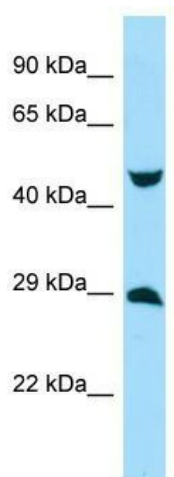


[View online »](#)

Note: Dog: 100%; Pig: 100%; Rat: 100%; Horse: 100%; Human: 100%; Bovine: 100%; Rabbit: 100%; Guinea pig: 100%; Mouse: 93%

Protein Families: Transmembrane

Product images:



WB Suggested Anti-MYCT1 Antibody; Titration: 1.0 ug/ml; Positive Control: ACHN Whole Cell