

Product datasheet for **TA331271**

MRPL41 Rabbit Polyclonal Antibody

Product data:

Product Type:	Primary Antibodies
Applications:	WB
Recommended Dilution:	WB
Reactivity:	Human
Host:	Rabbit
Isotype:	IgG
Clonality:	Polyclonal
Immunogen:	The immunogen for Anti-MRPL41 antibody is: synthetic peptide directed towards the C-terminal region of Human MRPL41. Synthetic peptide located within the following region: ESEETPLTAAQLFSEAVAPAIEKDFKDGTFDPDNLEKYGFPEPTQEGKLFQ
Formulation:	Liquid. Purified antibody supplied in 1x PBS buffer with 0.09% (w/v) sodium azide and 2% sucrose.
Conjugation:	Unconjugated
Storage:	Store at -20°C as received.
Stability:	Stable for 12 months from date of receipt.
Predicted Protein Size:	15 kDa
Gene Name:	mitochondrial ribosomal protein L41
Database Link:	NP_115866 Entrez Gene 64975 Human Q8IXM3
Background:	Mammalian mitochondrial ribosomal proteins are encoded by nuclear genes and help in protein synthesis within the mitochondrion. Mitochondrial ribosomes (mitoribosomes) consist of a small 28S subunit and a large 39S subunit. They have an estimated 75% protein to rRNA composition compared to prokaryotic ribosomes, where this ratio is reversed. Another difference between mammalian mitoribosomes and prokaryotic ribosomes is that the latter contain a 5S rRNA. Among different species, the proteins comprising the mitoribosome differ greatly in sequence, and sometimes in biochemical properties, which prevents easy recognition by sequence homology. This gene encodes a 39S subunit protein that belongs to the YmL27 ribosomal protein family.

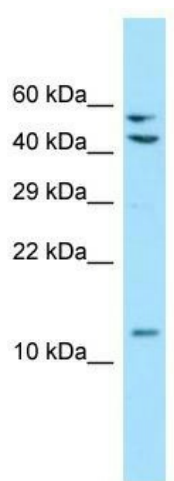


[View online »](#)

Synonyms: BMRP; MRP-L27; MRPL27; PIG3; RPML27

Note: Human: 100%; Pig: 93%; Mouse: 93%; Guinea pig: 93%; Rat: 86%; Bovine: 79%

Product images:



WB Suggested Anti-MRPL41 Antibody; Titration: 1.0 ug/ml; Positive Control: 293T Whole Cell
MRPL41 is supported by BioGPS gene expression data to be expressed in HEK293T